

RPF233Hu01 200µg

Recombinant Brain Specific Angiogenesis Inhibitor 3 (BAI3)

Organism Species: *Homo sapiens (Human)*

Instruction manual

FOR RESEARCH USE ONLY

NOT FOR USE IN CLINICAL DIAGNOSTIC PROCEDURES

12th Edition (Revised in Aug, 2016)

[PROPERTIES]

Source: Prokaryotic expression

Host: *E.coli*

Residues: Cys30~Pro508

Tags: N-terminal His Tag

Subcellular Location: Membrane

Purity: > 80%

Traits: Freeze-dried powder

Buffer formulation: 20mM Tris, 150mM NaCl, pH8.0, containing 0.01% SKL, 5% Trehalose.

Original Concentration: 15µg/mL

Applications: Positive Control; Immunogen; SDS-PAGE; WB.

(May be suitable for use in other assays to be determined by the end user.)

Predicted isoelectric point: 7.8

Predicted Molecular Mass: 57.9kDa

Accurate Molecular Mass: 58kDa as determined by SDS-PAGE reducing conditions.

[USAGE]

Reconstitute in ddH₂O to a concentration of 0.1-1.0 mg/mL. Do not vortex.

[STORAGE AND STABILITY]

Storage: Avoid repeated freeze/thaw cycles.

Store at 2-8°C for one month.

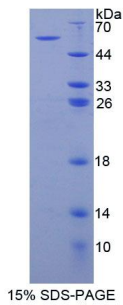
Aliquot and store at -80°C for 12 months.

Stability Test: The thermal stability is described by the loss rate. The loss rate was determined by accelerated thermal degradation test, that is, incubate the protein at 37°C for 48h, and no obvious degradation and precipitation were observed. The loss rate is less than 5% within the expiration date under appropriate storage condition.

[SEQUENCE]

			C	STLVKGVIIYG	SYSVSEMFPK
NFTNCTWTLE	NPDPKYSIY	LKFSKKDLSC	SNFSLLAYQF	DHFSHEKIKD	
LLRKNHSIMQ	LCNSKNAFVF	LQYDKNFIQI	RRVFPTNFPG	LQKKGEEDQK	
SFFEFLVLNK	VSPSQFGCHV	LCTWLESCLK	SENGRTEGCG	IMYTKCTCPQ	
HLGEWGIDDQ	SLILLNNVVL	PLNEQTEGCL	TQELQTTQVC	NLTREAKRPP	
KEEFGMMGDH	TIKSQRPRSV	HEKRVPQEQA	DAAKFMAQTG	ESGVEEWSQW	
STCSVTCGQG	SQVRTRTCVS	PYGTHCSGPL	RESRVCNNTA	LCPVHGVWEE	
WSPWSLCSFT	CGRGQRTRTR	SCTPPQYGGR	PCEGPETHHK	PCNIALCPVD	
GQWQEWSSWS	QCSVTCNGT	QQRSRQCTAA	AHGGSECRGP	WAESRECYNP	
ECTANGQWNQ	WGHWSGCSKS	CDGGWERRIR	TCQGAUITGQ	QCEGTGEEVR	
RCNEQRCP					

[IDENTIFICATION]



[IMPORTANT NOTE]

The kit is designed for research use only, we will not be responsible for any issue if the kit was used in clinical diagnostic or any other procedures.