

RPP710Hu01 100 µg

Recombinant C-Type Lectin Domain Family 11, Member A (CLEC11A)

Organism Species: *Homo sapiens (Human)*

Instruction manual

FOR RESEARCH USE ONLY

NOT FOR USE IN CLINICAL DIAGNOSTIC PROCEDURES

13th Edition (Revised in Aug, 2023)

[PROPERTIES]

Source: Prokaryotic expression

Host: *E.coli*

Residues: Ala22~Phe323

Tags: N-terminal His and GST Tag

Subcellular Location: Cytoplasm

Purity: > 97%

Traits: Freeze-dried powder

Buffer formulation: PBS, pH7.4, containing 0.01% SKL, 5% Trehalose.

Original Concentration: 200µg/mL

Applications: Positive Control; Immunogen; SDS-PAGE; WB.

(May be suitable for use in other assays to be determined by the end user.)

Predicted isoelectric point: 5.01

Predicted Molecular Mass: 63.5kDa

Accurate Molecular Mass: 64kDa as determined by SDS-PAGE reducing conditions.

[USAGE]

Reconstitute in 10mM PBS (pH7.4) to a concentration of 0.1-1.0 mg/mL. Do not vortex..

[STORAGE AND STABILITY]

Storage: Avoid repeated freeze/thaw cycles.

Store at 2-8°C for one month.

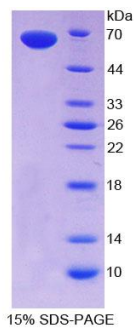
Aliquot and store at -80°C for 12 months.

Stability Test: The thermal stability is described by the loss rate. The loss rate was determined by accelerated thermal degradation test, that is, incubate the protein at 37°C for 48h, and no obvious degradation and precipitation were observed. The loss rate is less than 5% within the expiration date under appropriate storage condition.

[SEQUENCE]

ARGAEREWE GGWGGAQEEE REREALMLKH
LQEALGLPAG RGDENPACTV EGKEDWEMEE DQGEEEEEEA TPTPSSGPSP
SPTPEDIIVTY ILGRLAGLDA GLHQLHVRLH ALDTRVVVELT QGLRQLRNAA
GDTRDAVQAL QEAQGRAERE HGRLEGCLKG LRLGHKCFLL SRDFEAQAAA
QARCTARGGS LAQPADRQQM EALTRYLRAA LAPYNWVWVWL GVHRRRAEGL
YLFENGQRVS FFAWHRSPRP ELGAQPSASP HPLSPDQPNG GTLENCVAQA
SDDGSWWDHD CQRRLYYVCE FPF

[IDENTIFICATION]



[IMPORTANT NOTE]

The kit is designed for research use only, we will not be responsible for any issue if the kit was used in clinical diagnostic or any other procedures.