

**RPD332Hu01 50ug**

**Recombinant Calcium/Calmodulin Dependent Protein Kinase II Beta (CAMK2b)**

**Organism Species: *Homo sapiens (Human)***

***Instruction manual***

FOR RESEARCH USE ONLY

NOT FOR USE IN CLINICAL DIAGNOSTIC PROCEDURES

---

12th Edition (Revised in Aug, 2016)

**[ PROPERTIES ]**

**Source:** Prokaryotic expression

**Host:** *E.coli*

**Residues:** Met1~Lys301

**Tags:** N-terminal His Tag

**Subcellular Location:** Cytoplasm

**Purity:** > 80%

**Traits:** Freeze-dried powder

**Buffer formulation:** PBS, pH7.4, containing 0.01% SKL, 5% Trehalose.

**Original Concentration:** 50µg/mL

**Applications:** Positive Control; Immunogen; SDS-PAGE; WB.

(May be suitable for use in other assays to be determined by the end user.)

**Predicted isoelectric point:** 7.7

**Predicted Molecular Mass:** 38.0kDa

**Accurate Molecular Mass:** 38kDa as determined by SDS-PAGE reducing conditions.

**[ USAGE ]**

Reconstitute in ddH<sub>2</sub>O to a concentration of 0.1-0.5 mg/mL. Do not vortex.

**[ STORAGE AND STABILITY ]**

**Storage:** Avoid repeated freeze/thaw cycles.

Store at 2-8°C for one month.

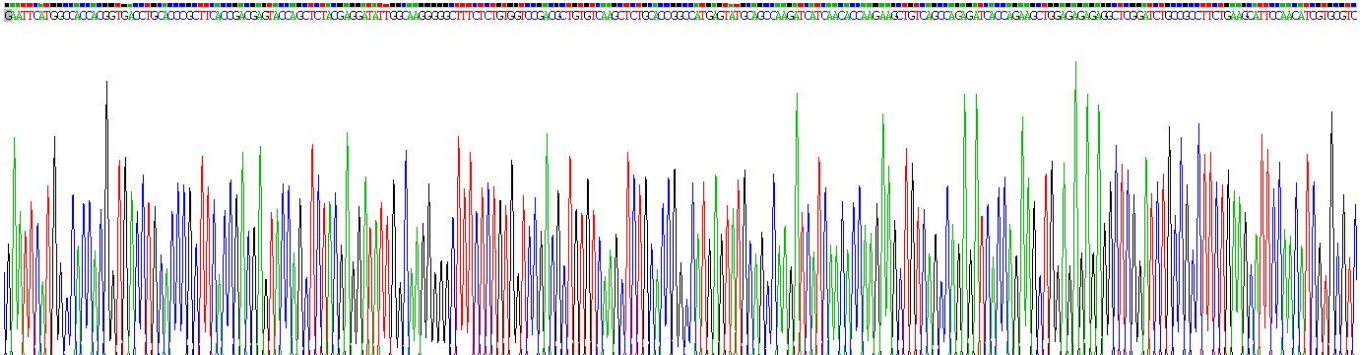
Aliquot and store at -80°C for 12 months.

**Stability Test:** The thermal stability is described by the loss rate. The loss rate was determined by accelerated thermal degradation test, that is, incubate the protein at 37°C for 48h, and no obvious degradation and precipitation were observed. The loss rate is less than 5% within the expiration date under appropriate storage condition.

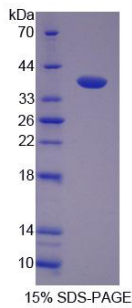
**[ SEQUENCE ]**

MATTVTCTRF TDEYQLYEDI GKGAFSVVRR CVKLCTGHEY AAKIINTKKL  
 SARDHQKLER EARICRLLKH SNIVRLHDSI SEEGFHYLVF DLVTGGELFE  
 DIVAREYYSE ADASHCIQI LEAVLHCHQM GVVHRDLKPE NLLASKCKG  
 AAVKLADFLG AIEVQGDQQA WFGFAGTPGY LSPEVLRKEA YGKPVDIWAC  
 GVILYILLVG YPPFWDEDQH KLYQQIKAGA YDFPSPEWDT VTPEAKNLIN  
 QMLTINPAKR ITAHEALKHP WVCQRSTVAS MMHRQETVEC LKKFNARRKL  
 K

**[ IDENTIFICATION ]**



**Figure . Gene Sequencing (extract)**



**[ IMPORTANT NOTE ]**

The kit is designed for research use only, we will not be responsible for any issue if the kit was used in clinical diagnostic or any other procedures.