

RPC358Hu01 50µg

Recombinant Calpain 2 (CAPN2)

Organism Species: *Homo sapiens* (Human)

Instruction manual

FOR RESEARCH USE ONLY

NOT FOR USE IN CLINICAL DIAGNOSTIC PROCEDURES

13th Edition (Revised in Aug, 2023)

[PROPERTIES]

Source: Prokaryotic expression

Host: *E.coli*

Residues: Leu45~Asp514

Tags: N-terminal His Tag

Subcellular Location: Membrane, Cytoplasm

Purity: > 97%

Traits: Freeze-dried powder

Buffer formulation: 20mM Tris, 150mM NaCl, pH8.0, containing 0.01% skl, 5%Trehalose.

Original Concentration: 50µg/mL

Applications: Positive Control; Immunogen; SDS-PAGE; WB.

(May be suitable for use in other assays to be determined by the end user.)

Predicted isoelectric point: 5.0

Predicted Molecular Mass: 57.4kDa

Accurate Molecular Mass: 57kDa as determined by SDS-PAGE reducing conditions.

[USAGE]

Reconstitute in ddH₂O to a concentration of 0.1-0.5 mg/mL. Do not vortex.

[STORAGE AND STABILITY]

Storage: Avoid repeated freeze/thaw cycles.

Store at 2-8°C for one month.

Aliquot and store at -80°C for 12 months.

Stability Test: The thermal stability is described by the loss rate. The loss rate was determined by accelerated thermal degradation test, that is, incubate the protein at 37°C for 48h, and no obvious degradation and precipitation were observed. The loss rate is less than 5% within the expiration date under appropriate storage condition.

[SEQUENCE]

LFQDPS

FPAIPSALGF KELGPYSSKT RGI EWKRPT E ICADPQFIIG GATRTDICQG
 ALGDCWLLAA IASLTLINEE I LARVVPLNQS FQENYAGIFH FQFWQYGEWV
 EVVDDRLPT KDGELLFVHS AEGSEFWSAL LEKAYAKING CYEALSGGAT
 TEGFEDFTGG IAEWYELKKP PPNLFKIIQK ALQKGSLLGC SIDITSAADS
 EAITFQKLVK GHAYSVTGAE EVESNGSLQK LIRIRNPWGE VEWTGRWIND
 CPSWNTIDPE ERERLTRHE DGEFWMFSFD FLRHYSRLEI CNLTPDTLTS
 DTYKKWKLTK MDGNWRRGST AGGCRNYPNT FWMNPQYLIK LEEDEDEED
 GESGCTFLVG LIQKHRRRQR KMGEDMHTIG FGIYEVPEEL SGQTNIHLSK
 NFFLTNRARE RSDTFINLRE VLNRFKLPPG EYILVPSTFE PNKDGDFCIR
 VFSEKKADYQ AVDD

[IDENTIFICATION]

GGATGCTCTTGGAGCCGATCTTCCGCGATCCGCTCCGCTTCWAGGAGTTGGGGCTTCCTCCGAAACCTGGCCGATGGAGTGGGACCCGCGGATCTGGCTGACCCCGTTTATCATTTGGAGGAGCCGACCCCGAGCATCTGCAACGAGCCCTTGGGCTCCGCTCCGCGGCTATCCCTCCCTGACCTTGAATGAGGATCCGCTCCGAGTCC

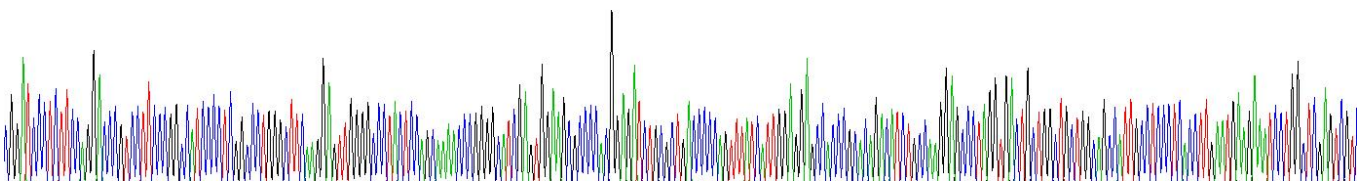
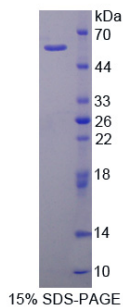


Figure . Gene Sequencing (extract)



[IMPORTANT NOTE]

The kit is designed for research use only, we will not be responsible for any issue if the kit was used in clinical diagnostic or any other procedures.