

RPF316Ra01 100 µg
Recombinant Carboxypeptidase A2, Pancreatic (CPA2)
Organism Species: *Rattus norvegicus* (Rat)
Instruction manual

FOR RESEARCH USE ONLY
NOT FOR USE IN CLINICAL DIAGNOSTIC PROCEDURES

13th Edition (Revised in Aug, 2023)

[PROPERTIES]

Source: Prokaryotic expression

Host: *E.coli*

Residues: Leu26~Tyr417

Tags: N-terminal His Tag

Subcellular Location: Secreted

Purity: > 97%

Traits: Freeze-dried powder

Buffer formulation: PBS, pH7.4, containing 0.01% SKL, 5% Trehalose

Original Concentration: 200µg/mL

Applications: Positive Control; Immunogen; SDS-PAGE; WB.

(May be suitable for use in other assays to be determined by the end user.)

Predicted isoelectric point: 5.22

Predicted Molecular Mass: 47.8kDa

Accurate Molecular Mass: 45kDa as determined by SDS-PAGE reducing conditions.

[USAGE]

Reconstitute in 10mM PBS (pH7.4) to a concentration of 0.1-1.0 mg/mL. Do not vortex.

[STORAGE AND STABILITY]

Storage: Avoid repeated freeze/thaw cycles.

Store at 2-8°C for one month.

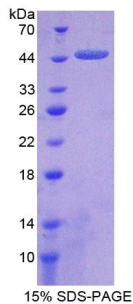
Aliquot and store at -80°C for 12 months.

Stability Test: The thermal stability is described by the loss rate. The loss rate was determined by accelerated thermal degradation test, that is, incubate the protein at 37°C for 48h, and no obvious degradation and precipitation were observed. The loss rate is less than 5% within the expiration date under appropriate storage condition.

[SEQUENCE]

LEIIP SHEEQIRTLTLL QLEAEEHLEL
DFWKSPTIPG ETVHVRVPFA SIQAVKVFLE SQGIDYSIMI EDVQVLLDQE
REEMLFNQQR ERGGNFNFEA YHTLEEIYQE MDNLVAENPG LVSKVNLGSS
FENRPMNVLK FSTGGDKPAI WLDAGIHARE WVTQATALWT ANKIASDYGT
DPAITSLNT LDIFLLPVTN PDGYVFSQTT NRMWRKTRSK RSGSGCVGVD
PNRNWDANFG GPGASSSPCS DSYHGPKPNS EVEVKSIVDF IKSHGKVKAF
ITLHSYSQLL MFPYGYKCTK PDDFNELDEV AQKAAQALKR LHGTSYKVGP
ICSVIYQASG GSIDWAYDLG IKYSFAPFLR DTAFYGFLLP AKQILPTAEE
TWLGLKTIME HVRDHPY

[IDENTIFICATION]



[IMPORTANT NOTE]

The kit is designed for research use only, we will not be responsible for any issue if the kit was used in clinical diagnostic or any other procedures.