

RPF320Mu01 100µg
Recombinant Carboxypeptidase B1, Tissue (CPB1)
Organism Species: *Mus musculus* (Mouse)
Instruction manual

FOR RESEARCH USE ONLY
NOT FOR USE IN CLINICAL DIAGNOSTIC PROCEDURES

13th Edition (Revised in Aug, 2023)

[PROPERTIES]

Source: Prokaryotic expression

Host: *E.coli*

Residues: Ala109~Tyr415

Tags: N-terminal His Tag

Subcellular Location: Extracellular matrix

Purity: > 97%

Traits: Freeze-dried powder

Buffer formulation: PBS, pH7.4, containing 0.01% SKL, 5% Trehalose .

Original Concentration: 200µg/mL

Applications: Positive Control; Immunogen; SDS-PAGE; WB.

(May be suitable for use in other assays to be determined by the end user.)

Predicted isoelectric point: 6.7

Predicted Molecular Mass: 39.0kDa

Accurate Molecular Mass: 39kDa as determined by SDS-PAGE reducing conditions.

[USAGE]

Reconstitute in 10mM PBS (pH7.4) to a concentration of 0.1-1.0 mg/mL. Do not vortex.

[STORAGE AND STABILITY]

Storage: Avoid repeated freeze/thaw cycles.

Store at 2-8°C for one month.

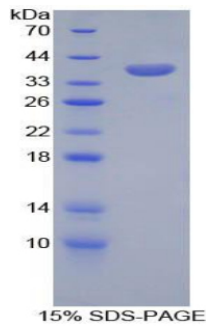
Aliquot and store at -80°C for 12 months.

Stability Test: The thermal stability is described by the loss rate. The loss rate was determined by accelerated thermal degradation test, that is, incubate the protein at 37°C for 48h, and no obvious degradation and precipitation were observed. The loss rate is less than 5% within the expiration date under appropriate storage condition.

[SEQUENCE]

ETIEAWIQQV ANDNPDLVSK RVIGTTFEGR NMYVLKIGKD RPNKPAFFID AS GHSYTKYNNW
 PAFCQWFVRE AVR TYKQEIH MKRLLELDF YVLPVVDIG YVYTWAKDRM WRKTRSTTAG
 SSCFGVDPNR NFDAGWCEVG ASRSPCSDTY CGTPPESEKE TKALADFIRQ NLSSIKAYLT
 VHSYSQMMLY PYSYDYKLPE NYEELNALVK GAAKELSTLH GTKYTYGPGA TTIYPAAGGS
 DDWAYDQGIK YSFTFELRDK GFFGFLLPES QIRQTCEETM LAVKYIANYV LEHPY

[IDENTIFICATION]



[IMPORTANT NOTE]

The kit is designed for research use only, we will not be responsible for any issue if the kit was used in clinical diagnostic or any other procedures.