

RPC417Hu01 100µg
Recombinant Carnitine Palmitoyltransferase 2, Mitochondrial (CPT2)
Organism Species: *Homo sapiens (Human)*
Instruction manual

FOR RESEARCH USE ONLY
NOT FOR USE IN CLINICAL DIAGNOSTIC PROCEDURES

13th Edition (Revised in Aug, 2023)

[PROPERTIES]

Source: Prokaryotic expression

Host: *E.coli*

Residues: Ala152~Ser658

Tags: N-terminal His and GST Tag

Subcellular Location: Nucleus, Mitochondrion

Purity: > 97%

Traits: Freeze-dried powder

Buffer formulation: PBS, pH7.4, containing 0.01% SKL, 5% Trehalose.

Original Concentration: 200µg/mL

Applications: Positive Control; Immunogen; SDS-PAGE; WB.

(May be suitable for use in other assays to be determined by the end user.)

Predicted isoelectric point: 7.0

Predicted Molecular Mass: 86.6kDa

Accurate Molecular Mass: 87kDa as determined by SDS-PAGE reducing conditions.

[USAGE]

Reconstitute in 10mM PBS (pH7.4) to a concentration of 0.1-1.0 mg/mL. Do not vortex.

[STORAGE AND STABILITY]

Storage: Avoid repeated freeze/thaw cycles.

Store at 2-8°C for one month.

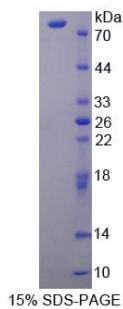
Aliquot and store at -80°C for 12 months.

Stability Test: The thermal stability is described by the loss rate. The loss rate was determined by accelerated thermal degradation test, that is, incubate the protein at 37°C for 48h, and no obvious degradation and precipitation were observed. The loss rate is less than 5% within the expiration date under appropriate storage condition.

[SEQUENCE]

ATNMTVSAI RFLKTLRAGL LEPEVFHLNP AKSDTITFKR LIRFVPSLS
WYGAYLVNAY PLDMSQYFRL FNSTRLPKPS RDELFTDDKA RHLLVLRKGN
FYIFDVLDQD GNIVSPSEIQ AHLKYILSDS SPAPEFPLAY LTSENRIWA
ELRQKLMSSG NEESLRKVDS AVFCLCLDDF PIKDLVHLSH NMLHGDGTNR
WFDKSFNLI AKDGSTAVHF EHSWGDGVAV LRFFNEVFKD STQTPAVTPQ
SQPATTDSTV TVQKLNFEEL DALKTGITAA KEKFDATMKT LTIDCVQFQR
GGKEFLKKQK LSPDAVAQLA FQMAFLRQYG QTVATYESCS TAAFKHGRTE
TIRPASVYTK RCSEAFVREP SRHSAGELQQ MMVECSKYHG QLTKEAAMGQ
GFDRHLFALR HLAAAKGIIL PELYLDPAYG QINHNLVLSL TLSSPAVNLG
GFAPVVSDGF GVGAVHDNW IGCNVSSYPG RNAREFLQCV EKALEDMFDA
LEGKSIKS

[IDENTIFICATION]



[IMPORTANT NOTE]

The kit is designed for research use only, we will not be responsible for any issue if the kit was used in clinical diagnostic or any other procedures.