

RPA682Mu01 10µg

Recombinant Caspase 12 (CASP12)

Organism Species: *Mus musculus* (Mouse)

Instruction manual

FOR RESEARCH USE ONLY

NOT FOR USE IN CLINICAL DIAGNOSTIC PROCEDURES

12th Edition (Revised in Aug, 2016)

[PROPERTIES]

Source: Prokaryotic expression

Host: *E.coli*

Residues: Met1~Phe413

Tags: N-terminal His and GST Tag

Subcellular Location: Secreted

Purity: > 90%

Traits: Freeze-dried powder

Buffer formulation: PBS, pH7.4, containing 0.01% SKL, 5% Trehalose.

Original Concentration: 50µg/mL

Applications: Positive Control; Immunogen; SDS-PAGE; WB.

(May be suitable for use in other assays to be determined by the end user.)

Predicted isoelectric point: 6.1

Predicted Molecular Mass: 77.1kDa

Accurate Molecular Mass: 77kDa as determined by SDS-PAGE reducing conditions.

[USAGE]

Reconstitute in ddH₂O to a concentration of 0-0.25 mg/mL. Do not vortex.

[STORAGE AND STABILITY]

Storage: Avoid repeated freeze/thaw cycles.

Store at 2-8°C for one month.

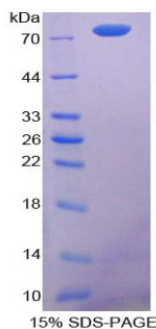
Aliquot and store at -80°C for 12 months.

Stability Test: The thermal stability is described by the loss rate. The loss rate was determined by accelerated thermal degradation test, that is, incubate the protein at 37°C for 48h, and no obvious degradation and precipitation were observed. The loss rate is less than 5% within the expiration date under appropriate storage condition.

[SEQUENCE]

MAARRTHERD PIYKIKGLAK DMLDGVFDDL VEKNVLNGDE LLKIGESASF
ILNKAENLVE NFLEKTD MAG KIFAGHIANS QEQLSLQFSN DEDDGPQKIC
TPSSPSES KR KVEDDEMEVN AGLAHESHLM LTAPHGLQSS EVQDTLKLCP
RDQFCKIKTE RAKEIYPVME KEGRTRLALI ICNKKFDYLF DRDNADTDIL
NMQELLENLG YSVVLKENLT AQEMETELMQ FAGRPEHQSS DSTFLVFMSH
GILEGICGVK HRNKKPDVLH DDTIFKIFNN SNCRSLRNKP KILIMQACRG
RYNGTIWVST NKG IATADTD EERVL SCKWN NSITKAHVET DFIAFKSSTP
HNISWKVGKT GSLFISKLID CFKKYCWCYH LEEIFRKVQH SFEVPGELTQ
MPTIERVSMT RYF

[IDENTIFICATION]



[IMPORTANT NOTE]

The kit is designed for research use only, we will not be responsible for any issue if the kit was used in clinical diagnostic or any other procedures.