

**RPC418Mu03 100µg**

**Recombinant Catalase (CAT)**

**Organism Species: *Mus musculus* (Mouse)**

***Instruction manual***

FOR RESEARCH USE ONLY

NOT FOR USE IN CLINICAL DIAGNOSTIC PROCEDURES

---

12th Edition (Revised in Aug, 2016)

**[ PROPERTIES ]**

**Source:** Prokaryotic expression

**Host:** *E.coli*

**Residues:** Ser2~Leu527

**Tags:** N-terminal His Tag

**Subcellular Location:** Secreted

**Purity:** > 90%

**Traits:** Freeze-dried powder

**Buffer formulation:** 20mM Tris, 150mM NaCl, pH8.0, containing 0.01% SKL, 5% Trehalose.

**Original Concentration:** 100µg/mL

**Applications:** Positive Control; Immunogen; SDS-PAGE; WB.

(May be suitable for use in other assays to be determined by the end user.)

**Predicted isoelectric point:** 8.0

**Predicted Molecular Mass:** 63.4kDa

**Accurate Molecular Mass:** 42&63kDa as determined by SDS-PAGE reducing conditions.

**Phenomenon explanation:**

The possible reasons that the actual band size differs from the predicted are as follows:

1. Splice variants: Alternative splicing may create different sized proteins from the same gene.
2. Relative charge: The composition of amino acids may affects the charge of the protein.
3. Post-translational modification: Phosphorylation, glycosylation, methylation etc.
4. Post-translation cleavage: Many proteins are synthesized as pro-proteins, and then cleaved to give the active form.
5. Polymerization of the target protein: Dimerization, multimerization etc.

**[ USAGE ]**

Reconstitute in 20mM Tris, 150mM NaCl (pH8.0) to a concentration of 0.1-1.0 mg/mL. Do not vortex.

**[ STORAGE AND STABILITY ]**

**Storage:** Avoid repeated freeze/thaw cycles.

Store at 2-8°C for one month.

Aliquot and store at -80°C for 12 months.

**Stability Test:** The thermal stability is described by the loss rate. The loss rate was determined by accelerated thermal degradation test, that is, incubate the protein at 37°C for 48h, and no obvious degradation and precipitation were observed. The loss rate is less than 5% within the expiration date under appropriate storage condition.

**[ SEQUENCE ]**

```

SDSRDPASD QMKQWKEQRA SQRPDVLTG GGNPIGDKLN IMTAGSRGPL
LVQDVVFTDE MAHFDREERIP ERVVHAKGAG AFGYFEVTHD ITRYSKAKVF
EHIGKRTPIA VRFSTVTGES GSADTVRDPR GFAVKFYTED GNWDLVGNNT
PIFFIRDAIL FPSFIHSQKR NPQTHLKDPD MVWDFWSLRP ESLHQVSFLF
SDRGIPDTHR HMNGYGSHTF KLVNADGEAV YCKFHYKTDQ GIKNLPVGEA
GRLAQEDPDY GLRDLFNAIA NGNYPSTWTFY IQVMTFKEAE TFPFNPFDLT
KVWPHKDYPL IPVGKLVLNK NPVNYFAEVE QMAFDPSNMP PGIPEPDKM
LQGRLEFAYPD THRHRLGPNY LQIPVNCOPYR ARVANYQRDG PMCMHDNQQG
APNYYPNSFS APEQQRSALE HSVQCAVDVK RFNSANEDNV TQVRTFYTKV
LNEEERKRLC ENIAGHLKDA QLFIQKKAVK NFTDVHPDYG ARIQALLDKY
NAEKPKNAIH TYTQAGSHMA AKGKANL
  
```

**[ IDENTIFICATION ]**

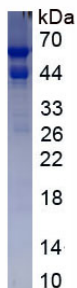


Figure. SDS-PAGE

**[ IMPORTANT NOTE ]**

The kit is designed for research use only, we will not be responsible for any issue if the kit was used in clinical diagnostic or any other procedures.