

RPD993Mu01 500µg

Recombinant Cathepsin G (CTSG)

Organism Species: *Mus musculus* (Mouse)

Instruction manual

FOR RESEARCH USE ONLY

NOT FOR USE IN CLINICAL DIAGNOSTIC PROCEDURES

13th Edition (Revised in Aug, 2023)

[PROPERTIES]

Source: Prokaryotic expression

Host: *E.coli*

Residues: Ile21~Thr261

Tags: N-terminal His and GST Tag

Subcellular Location: Membrane

Purity: > 80%

Traits: Freeze-dried powder

Buffer formulation: PBS, pH7.4, containing 0.01% SKL, 5% Trehalose .

Original Concentration: 100µg/mL

Applications: Positive Control; Immunogen; SDS-PAGE; WB.

(May be suitable for use in other assays to be determined by the end user.)

Predicted isoelectric point: 10.8

Predicted Molecular Mass: 56.9kDa

Accurate Molecular Mass: 57kDa as determined by SDS-PAGE reducing conditions.

[USAGE]

Reconstitute in ddH₂O to a concentration of 0.1-0.5 mg/mL. Do not vortex.

[STORAGE AND STABILITY]

Storage: Avoid repeated freeze/thaw cycles.

Store at 2-8°C for one month.

Aliquot and store at -80°C for 12 months.

Stability Test: The thermal stability is described by the loss rate. The loss rate was determined by accelerated thermal degradation test, that is, incubate the protein at 37°C for 48h, and no obvious degradation and precipitation were observed. The loss rate is less than 5% within the expiration date under appropriate storage condition.

[SEQUENCE]

I I G G R E A R P H S Y P Y M A F L L I Q S P E G L S A C G
 G F L V R E D F V L T A A H C L G S S I N V T L G A H N I Q M R E R T Q L I T V L R A I R H P D Y
 N P Q N I R N D I M L L Q L R R R A R R S G S V K P V A L P Q A S K K L Q P G D L C T V A G W G R V
 S Q S R G T N V L Q E V Q L R V Q M D Q M C A N R F Q F Y N S Q T Q I C V G N P R E R K S A F R G D
 S G G P L V C S N V A Q G I V S Y G S N N G N P P A V F T K I Q S F M P W I K R T M R R F A P R Y Q
 R P A N S L S Q A Q T

[IDENTIFICATION]

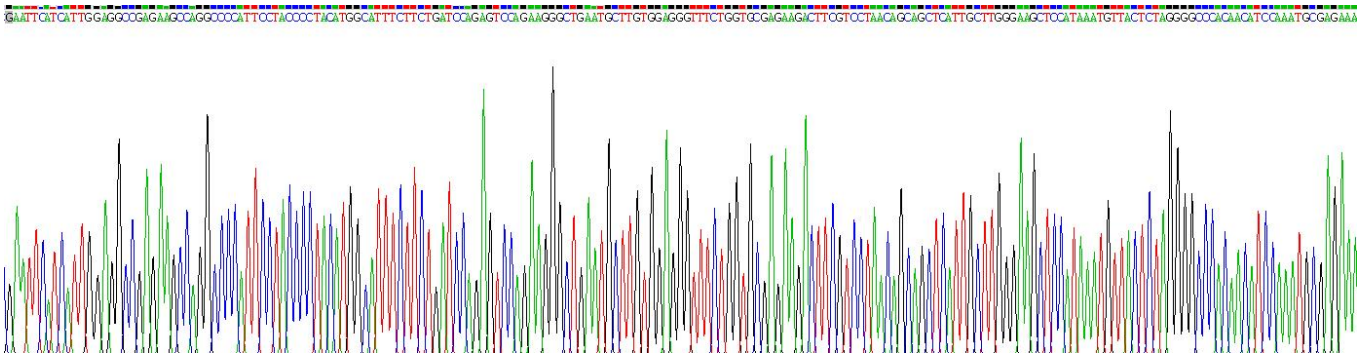


Figure . Gene Sequencing (extract)



Figure. SDS-PAGE

[IMPORTANT NOTE]

The kit is designed for research use only, we will not be responsible for any issue if the kit was used in clinical diagnostic or any other procedures.