

RPC966Ra01 100ug

Recombinant Cathepsin H (CTSH)

Organism Species: *Rattus norvegicus* (Rat)

Instruction manual

FOR RESEARCH USE ONLY

NOT FOR USE IN CLINICAL DIAGNOSTIC PROCEDURES

13th Edition (Revised in Aug, 2023)

[PROPERTIES]

Source: Prokaryotic expression

Host: *E.coli*

Residues: Ala21~Val333

Tags: N-terminal His Tag

Subcellular Location: Cytoplasm, Golgi apparatus

Purity: > 90%

Traits: Freeze-dried powder

Buffer formulation: pH7.4, containing 0.01% SKL, 5% Trehalose

Original Concentration: 200µg/mL

Applications: Positive Control; Immunogen; SDS-PAGE; WB.

(May be suitable for use in other assays to be determined by the end user.)

Predicted isoelectric point: 8.7

Predicted Molecular Mass: 38.8kDa

Accurate Molecular Mass: 39kDa as determined by SDS-PAGE reducing conditions.

[USAGE]

Reconstitute in 10mM PBS (pH7.4) to a concentration of 0.1-1.0 mg/mL. Do not vortex

[STORAGE AND STABILITY]

Storage: Avoid repeated freeze/thaw cycles.

Store at 2-8°C for one month.

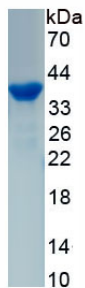
Aliquot and store at -80°C for 12 months.

Stability Test: The thermal stability is described by the loss rate. The loss rate was determined by accelerated thermal degradation test, that is, incubate the protein at 37°C for 48h, and no obvious degradation and precipitation were observed. The loss rate is less than 5% within the expiration date under appropriate storage condition.

[SEQUENCE]

AELTVNAIEK FHFTSWMKQH QKTYSSREYS HRLQVFANNW RKIQAHNQRN
HTFKMGLNQF SDMSFAEIKH KYLWSEPQNC SATKSNYLRG TGPYPSSMDW
RKKGNVVSPV KNQGACGSCW TFSTTGALES AVAIASGKMM TLAEQQLVDC
AQNFNNHGCQ GGLPSQAF EY ILYNKGIMGE DSYPYIGKNG QCKFNPEKAV
AFVKNVNVNIT LNDEAAMVEA VALYNPVSFA FEVTEDFMMY KSGVYSSNSC
HKTPDKVNHA VLAVGYGEQN GLLYWIVKNS WGSNWGNGY FLIERGKNMC
GLAACASYPI PQV

[IDENTIFICATION]



[IMPORTANT NOTE]

The kit is designed for research use only, we will not be responsible for any issue if the kit was used in clinical diagnostic or any other procedures.