

RPA909Mu01 100µg
Recombinant Ceruloplasmin (CP)
Organism Species: *Mus musculus* (Mouse)
Instruction manual

FOR RESEARCH USE ONLY
NOT FOR USE IN CLINICAL DIAGNOSTIC PROCEDURES

12th Edition (Revised in Aug, 2016)

[PROPERTIES]

Source: Prokaryotic expression

Host: *E.coli*

Residues: Tyr729~Gly1061

Tags: N-terminal His Tag

Subcellular Location: Secreted

Purity: > 97%

Traits: Freeze-dried powder

Buffer formulation: 20mM Tris, 150mM NaCl, pH8.0, containing 0.01% SKL, 5% Trehalose.

Original Concentration: 300µg/mL

Applications: Positive Control; Immunogen; SDS-PAGE; WB.

(May be suitable for use in other assays to be determined by the end user.)

Predicted isoelectric point: 6.5

Predicted Molecular Mass: 42.1kDa

Accurate Molecular Mass: 42kDa as determined by SDS-PAGE reducing conditions.

[USAGE]

Reconstitute in 20mM Tris, 150mM NaCl (pH8.0) to a concentration of 0.1-1.0 mg/mL. Do not vortex.

[STORAGE AND STABILITY]

Storage: Avoid repeated freeze/thaw cycles.

Store at 2-8°C for one month.

Aliquot and store at -80°C for 12 months.

Stability Test: The thermal stability is described by the loss rate. The loss rate was determined by accelerated thermal degradation test, that is, incubate the protein at 37°C for 48h, and no obvious degradation and precipitation were observed. The loss rate is less than 5% within the expiration date under appropriate storage condition.

[SEQUENCE]

```

                YY VAAVEVEWDY SPSRAWEKEL
HHLQEQNVSN VFLDKKEEFFI GSKYKKVVYR QFTDSSFREQ VKRRAEDEHL
GILGPPIHAN VGDKVKVVKF NMATRPYSIH AHGVKTESST VVPTLPGEVR
TYTWQIPERS GAGREDSACI PWAYYSTVDR VKDLYSGLIG PLIVCRKSYV
KVFSPKKKME FLLFLVDFE NESWYLDNI KTYSEHPEKV NKDNEEFLES
NKMHAINGKM FGNLQGLTMH VKDEVNWWVM GMGNEIDLHT VHFHGHFSFY
KHRGVYSSDV FDLFPQTYQT LEMFPQTPGT WLLHCHVTDH VHAGMATTYT
VLPVEQETKS G
    
```

[IDENTIFICATION]

GGATTCGCTTATTACTCAACCGTGGATGGTAAAGGATCTCTATAAGTGGCTAATAGGCGCTTGATTGTTTGTGGAACTCTATGTGAAAGTATTCATCTCTAAAAGAAATGGAGTTTCCCTTTTGTTCGAGTATTGATGAGATGATCTTGTACTTATGATGATAACATCAATAGTACTCTGATCAAG

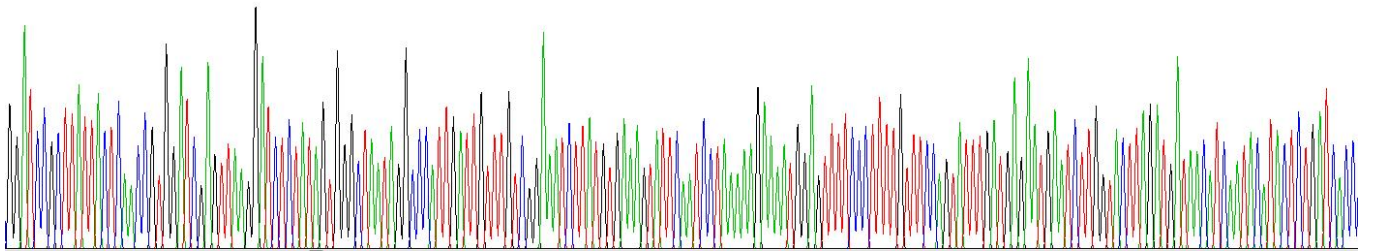
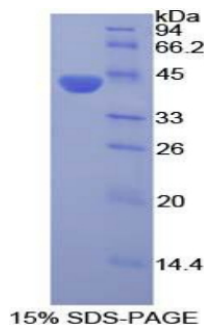


Figure . Gene Sequencing (extract)



[IMPORTANT NOTE]

The kit is designed for research use only, we will not be responsible for any issue if the kit was used in clinical diagnostic or any other procedures.