

RPL292Hu01 50µg

Recombinant Chaperonin Containing TCP1, Subunit 2 (CCT2)

Organism Species: *Homo sapiens (Human)*

Instruction manual

FOR RESEARCH USE ONLY

NOT FOR USE IN CLINICAL DIAGNOSTIC PROCEDURES

12th Edition (Revised in Aug, 2016)

[PROPERTIES]

Source: Prokaryotic expression

Host: *E.coli*

Residues: Met1~Cys488

Tags: N-terminal His Tag

Subcellular Location: Cytoplasm

Purity: > 97%

Traits: Freeze-dried powder

Buffer formulation: 20mM Tris, 150mM NaCl, pH8.0, containing 0.01% skl, 5%Trehalose.

Original Concentration: 200µg/mL

Applications: Positive Control; Immunogen; SDS-PAGE; WB.

(May be suitable for use in other assays to be determined by the end user.)

Predicted isoelectric point: 6.0

Predicted Molecular Mass: 56.4kDa

Accurate Molecular Mass: 56kDa as determined by SDS-PAGE reducing conditions.

[USAGE]

Reconstitute in ddH₂O to a concentration of 0.1-1.0 mg/mL. Do not vortex.

[STORAGE AND STABILITY]

Storage: Avoid repeated freeze/thaw cycles.

Store at 2-8°C for one month.

Aliquot and store at -80°C for 12 months.

Stability Test: The thermal stability is described by the loss rate. The loss rate was determined by accelerated thermal degradation test, that is, incubate the protein at 37°C for 48h, and no obvious degradation and precipitation were observed. The loss rate is less than 5% within the expiration date under appropriate storage condition.

[SEQUENCE]

| | | | | |
|------------|------------|-------------|------------|------------|
| MDKILLSSGR | DASLMVTNDG | ATILKNIGVD | NPAAKVLVDM | SRVQDDEVGD |
| GTTSVTVLAA | ELLREAESLI | AKKIHPQTII | AGWREATKAA | REALLSSAVD |
| HGSDEVKFRQ | DLMNIAGTTL | SSKLLTHHKD | HFTKLAVEAV | LRLKGSNLE |
| AIHI IKKLG | SLADSYLDEG | FLLDKKIGVN | QPKRIENAKI | LIANTGMDTD |
| KIKIFGSRVR | VDSTAKVAEI | EHAKEKMKKE | KVERILKHGI | NCFINRQLIY |
| NYPEQLFGAA | GVMAIEHADP | AGVERLALVT | GGEIASTFDH | PELVKLGSCK |
| LIEEVMIGED | KLIHFSGVAL | GEACTIVLRG | ATQQILDEAE | RSLHDALCVL |
| AQTVKDSRTV | YGGGCSEMLM | AHAVTQLANR | TPGKEAVAME | SYAKALRMLP |
| TIIADNAGYD | SADLVAQLRA | AHSEGNTTAG | LDMREGTIGD | MAILGITESH |
| QVKRQVLLSA | AEEAEVILRV | DNI IKAAPRK | RVPDHHPC | |

[IDENTIFICATION]

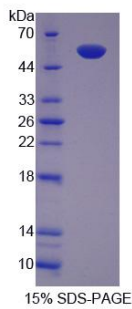


Figure. SDS-PAGE

[IMPORTANT NOTE]

The kit is designed for research use only, we will not be responsible for any issue if the kit was used in clinical diagnostic or any other procedures.