

RPB250Hu01 50µg

Recombinant Cluster Of Differentiation 73 (CD73)

Organism Species: *Homo sapiens (Human)*

Instruction manual

FOR RESEARCH USE ONLY

NOT FOR USE IN CLINICAL DIAGNOSTIC PROCEDURES

13th Edition (Revised in Aug, 2023)

[PROPERTIES]

Source: Prokaryotic expression

Host: *E.coli*

Residues: Leu29~Thr500

Tags: N-terminal His Tag

Subcellular Location: Membrane

Purity: > 90%

Traits: Freeze-dried powder

Buffer formulation: 20mM Tris, 150mM NaCl, pH8.0, containing 1mM EDTA, 1mM DTT, 0.01% SKL, 5% Trehalose .

Original Concentration: 200µg/mL

Applications: Positive Control; Immunogen; SDS-PAGE; WB.

(May be suitable for use in other assays to be determined by the end user.)

Predicted isoelectric point: 6.4

Predicted Molecular Mass: 53.6kDa

Accurate Molecular Mass: 53kDa as determined by SDS-PAGE reducing conditions.

[USAGE]

Reconstitute in 20mM Tris, 150mM NaCl (pH8.0) to a concentration of 0.1-1.0 mg/mL. Do not vortex.

[STORAGE AND STABILITY]

Storage: Avoid repeated freeze/thaw cycles.

Store at 2-8°C for one month.

Aliquot and store at -80°C for 12 months.

Stability Test: The thermal stability is described by the loss rate. The loss rate was determined by accelerated thermal degradation test, that is, incubate the protein at 37°C for 48h, and no obvious degradation and precipitation were observed. The loss rate is less than 5% within the expiration date under appropriate storage condition.

[SEQUENCE]

```

          LT ILHTNDVHSR LEQTSSESSK
CVNASRCMGG VARLFTKVQQ IRRAEPNVLL LDAGDQYQGT IWFTVYKGAE
VAHFMNALRY DAMALGNHEF DNGVEGLIEP LLKEAKFPIL SANIKAKGPL
ASQISGLYLP YKVLPGVDEV VGIVGYTSKE TPFLSNPGTN LVFEDEITAL
QPEVDKLTNL NVNKIIALGH SGFEMDKLIA QKVRGVDVVV GGHSNTFLYT
GNPPSKEVPA GKYPFIVTSD DGRKVPVVQA YAFGKYLGYL KIEFDERGNV
ISSHGNPILL NSSIPEDPSI KADINKWRIK LDNYSTQELG KTIVYLDGSS
QSCRFRFCNM GNLICDAMIN NNLRHTDEM FWNHVMCILN GGGIRSPIDE
RNNGTITWEN LAAVLPPGGT FDLVQLKGST LKKAFEHSVH RYQSTGEFL
QVGGIHVVYD LSRKPGDRVV KLDVLCTKCR VPSYDPLKMD EVYKVILPNF
LANGGDGFQM IKDELLRHDS GDQDINNVST YISKMKVIYP AVEGRIKFST
    
```

[IDENTIFICATION]

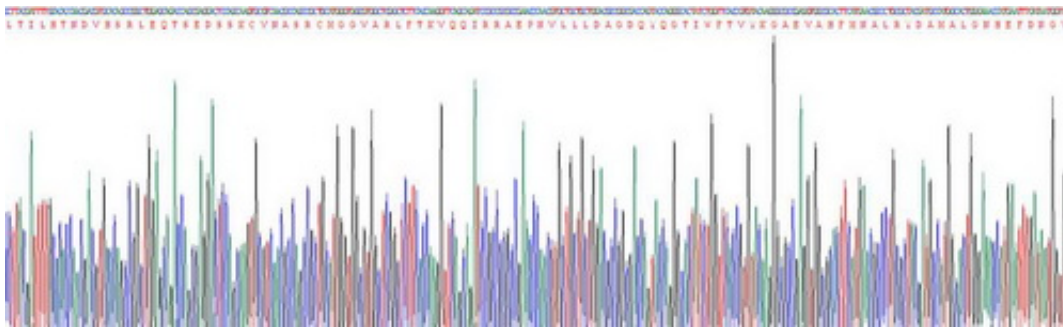


Figure . Gene Sequencing (extract)

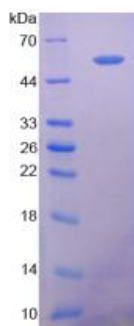


Figure. SDS-PAGE

[IMPORTANT NOTE]

The kit is designed for research use only, we will not be responsible for any issue if the kit was used in clinical diagnostic or any other procedures.