

RPA677Ra05 50µg
Recombinant Coagulation Factor XII (F12)
Organism Species: *Rattus norvegicus* (Rat)
Instruction manual

FOR RESEARCH USE ONLY
NOT FOR USE IN CLINICAL DIAGNOSTIC PROCEDURES

12th Edition (Revised in Aug, 2016)

[**PROPERTIES**]

Source: Prokaryotic expression

Host: *E.coli*

Residues: Ala20~Arg353

Tags: N-terminal His Tag

Subcellular Location: Secreted

Purity: > 90%

Traits: Freeze-dried powder

Buffer formulation: PBS, pH7.4, containing 0.01% SKL, 1mM DTT, 5% Trehalose and Proclin300.

Original Concentration: 200µg/mL

Applications: Positive Control; Immunogen; SDS-PAGE; WB.

(May be suitable for use in other assays to be determined by the end user.)

Predicted isoelectric point: 8.4

Predicted Molecular Mass: 41.5kDa

Accurate Molecular Mass: 42kDa as determined by SDS-PAGE reducing conditions.

[**USAGE**]

Reconstitute in 10mM PBS (pH7.4) to a concentration of 0.1-1.0 mg/mL. Do not vortex.

[**STORAGE AND STABILITY**]

Storage: Avoid repeated freeze/thaw cycles.

Store at 2-8°C for one month.

Aliquot and store at -80°C for 12 months.

Stability Test: The thermal stability is described by the loss rate. The loss rate was determined by accelerated thermal degradation test, that is, incubate the protein at 37°C for 48h, and no obvious degradation and precipitation were observed. The loss rate is less than 5% within the expiration date under appropriate storage condition.

[**SEQUENCE**]

```

A PPWKSKEFKD GAGDPSVVLV VDGKLCHFPF
QYHRRLYHKC IHKGQPGSRP WCATTPNFDE DQQWGYCLEP KKVVDHCSKH
SPCHKGGTCV NTPNGPHCLC PEHLTGKHCQ REKCFESQLL KFFHENEIWF
RTGPGGVARC QCKGPQAVCK LLTSQVCRVN PCLNGGTCLL VEDHRLCHCP
AGYAGPFCDL DLKATCYEDR GLSYRGQAKT TLSGAPCQRW ASEATYRNMV
ETQALSWGLG HHAFCRNPVN DTRPWCYVWS GDRLSWDYCD LEQCQMPTLT
SPVSPESHDM LKPRPPILQM PQFPSLSDAL DNSTRNQNVV SRTSTVVCGQ
RFR

```

[IDENTIFICATION]

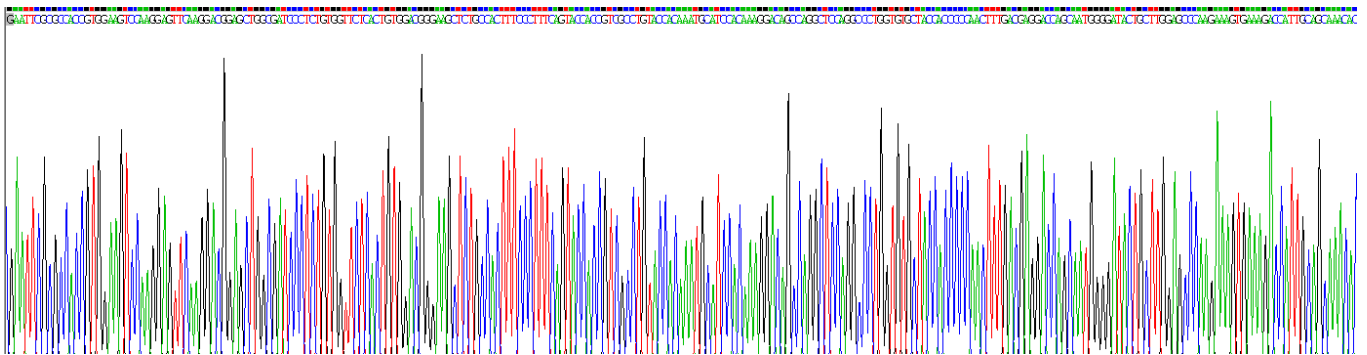


Figure . Gene Sequencing (extract)

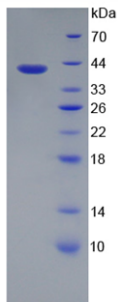


Figure. SDS-PAGE

[IMPORTANT NOTE]

The kit is designed for research use only, we will not be responsible for any issue if the kit was used in clinical diagnostic or any other procedures.