

**RPA677Ra08 50µg**  
**Recombinant Coagulation Factor XII (F12)**  
**Organism Species: *Rattus norvegicus* (Rat)**  
***Instruction manual***

FOR RESEARCH USE ONLY  
NOT FOR USE IN CLINICAL DIAGNOSTIC PROCEDURES

---

12th Edition (Revised in Aug, 2016)

**[ PROPERTIES ]**

**Source:** Prokaryotic expression

**Host:** *E.coli*

**Residues:** Ala20~Arg353

**Tags:** His and TrxA Taq

**Subcellular Location:** Secreted

**Purity:** > 90%

**Traits:** Freeze-dried powder

**Buffer formulation:** PBS, pH7.4, containing 0.01% SKL, 1mM DTT, 5% Trehalose and Proclin300.

**Original Concentration:** 200µg/mL

**Applications:** Positive Control; Immunogen; SDS-PAGE; WB.

(May be suitable for use in other assays to be determined by the end user.)

**Predicted isoelectric point:** 8.4

**Predicted Molecular Mass:** 58.2kDa

**Accurate Molecular Mass:** 60kDa as determined by SDS-PAGE reducing conditions.

**[ USAGE ]**

Reconstitute in 10mM PBS (pH7.4) to a concentration of 0.1-1.0 mg/mL. Do not vortex.

**[ STORAGE AND STABILITY ]**

**Storage:** Avoid repeated freeze/thaw cycles.

Store at 2-8°C for one month.

Aliquot and store at -80°C for 12 months.

**Stability Test:** The thermal stability is described by the loss rate. The loss rate was determined by accelerated thermal degradation test, that is, incubate the protein at 37°C for 48h, and no obvious degradation and precipitation were observed. The loss rate is less than 5% within the expiration date under appropriate storage condition.

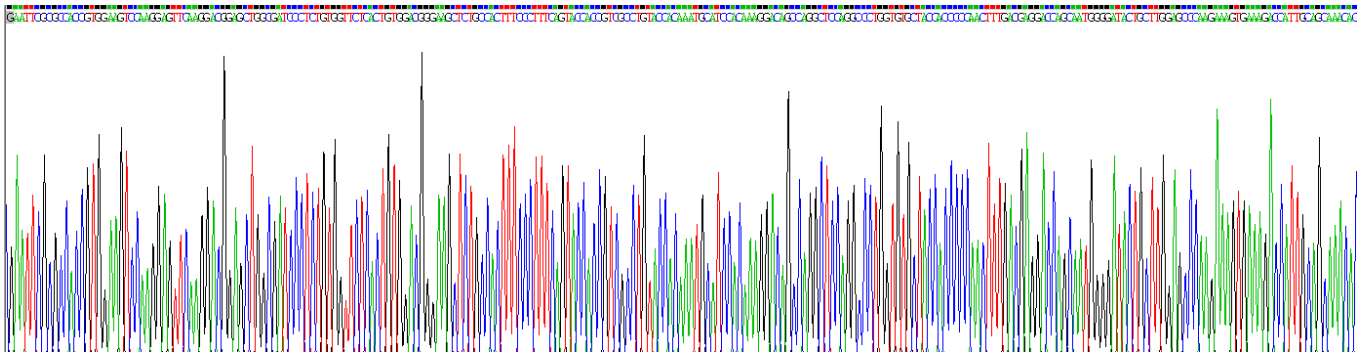
**[ SEQUENCE ]**

```

A PPWKSKEFKD GAGDPSVVLV VDGKLCHFPF
QYHRRLYHKC IHKGQPGSRP WCATTPNFDE DQQWGYCLEP KKVVDHCSKH
SPCHKGGTCV NTPNGPHCLC PEHLTGKHCQ REKCFESQLL KFFHENEIWF
RTGPGGVARC QCKGPQAVCK LLTSQVCRVN PCLNGGTCLL VEDHRLCHCP
AGYAGPFCDL DLKATCYEDR GLSYRGQAKT TLSGAPCQRW ASEATYRNMV
ETQALSWGLG HHAFCRNPVN DTRPWCYVWS GDRLSWDYCD LEQCQMPTLT
SPVSPESHDM LKPRPPILQM PQFPLSDAL DNSTRNQNVV SRTSTVVCQG
RFR

```

**[ IDENTIFICATION ]**



**Figure . Gene Sequencing (extract)**

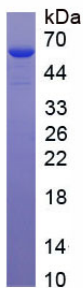


Figure. SDS-PAGE

**[ IMPORTANT NOTE ]**

The kit is designed for research use only, we will not be responsible for any issue if the kit was used in clinical diagnostic or any other procedures.