

**RPA350Hu02 10µg**

**Recombinant Collagen Type I Alpha 1 (COL1a1)**

**Organism Species: *Homo sapiens (Human)***

***Instruction manual***

FOR RESEARCH USE ONLY

NOT FOR USE IN CLINICAL DIAGNOSTIC PROCEDURES

---

13th Edition (Revised in Aug, 2023)

**[ PROPERTIES ]**

**Source:** Prokaryotic expression

**Host:** *E.coli*

**Residues:** Ala1218~Ile1440

**Tags:** N-terminal His Tag

**Subcellular Location:** Secreted, Extracellular matrix

**Purity:** > 95%

**Traits:** Freeze-dried powder

**Buffer formulation:** 20mM Tris, 150mM NaCl, pH8.0, containing 0.01% skl, 5%Trehalose.

**Original Concentration:** 1000µg/mL

**Applications:** Positive Control; Immunogen; SDS-PAGE; WB.

(May be suitable for use in other assays to be determined by the end user.)

**Predicted isoelectric point:** 6.4

**Predicted Molecular Mass:** 26.4kDa

**Accurate Molecular Mass:** 28kDa as determined by SDS-PAGE reducing conditions.

**[ USAGE ]**

Reconstitute in 20mM Tris, 150mM NaCl (pH8.0) to a concentration of 0.1-1.0 mg/mL. Do not vortex.

**[ STORAGE AND STABILITY ]**

**Storage:** Avoid repeated freeze/thaw cycles.

Store at 2-8°C for one month.

Aliquot and store at -80°C for 12 months.

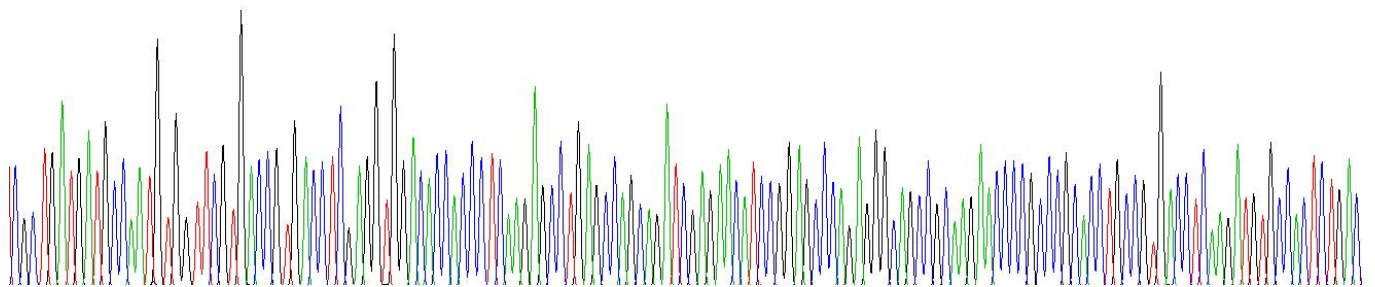
**Stability Test:** The thermal stability is described by the loss rate. The loss rate was determined by accelerated thermal degradation test, that is, incubate the protein at 37°C for 48h, and no obvious degradation and precipitation were observed. The loss rate is less than 5% within the expiration date under appropriate storage condition.

**[ SEQUENCE ]**

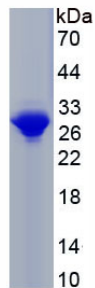
ADD ANVVRDRDLE VDTTLKLSLSQ QIENIRSPEG  
 SRKNPARTCR DLKMCHSDWK SGEYWIDPNQ GCNLDAIKVF CNMETGETCV  
 YPTQPSVAQK NWYISKNPDK KRHVWFGESM TDGFQFEYGG QGSDPADVAI  
 QLTFRLRMST EASQNITYHC KNSVAYMDQQ TGNLKKALLL QGSNEIEIRA  
 EGNSRFTYSV TVDGCTSHTG AWGKTVIEYK TTKTSRLPII

**[ IDENTIFICATION ]**

CGC TG A TG ATGCCAA TG TGG TCG TG ACCG TG ACC TCG AGG TG GACACCACCC TCAAG AG CC TG AGCCAGCAG A TCG AG AACATCCG G AGCCAG AGGGC AGCCGCAAG AACCCCGCCCGCACCTGCCG TG ACCTCAAG ATG TGCCAC TCTGAC  
 A D D A N V V R D R D L E V D T T L K S L S Q Q I E N I R S P E G S R K N P A R T C R D L K M C H S D



**Figure. Gene Sequencing (Extract)**



**Figure. SDS-PAGE**

**[ IMPORTANT NOTE ]**

The kit is designed for research use only, we will not be responsible for any issue if the kit was used in clinical diagnostic or any other procedures.