

**RPA090Hu01 200µg**  
**Recombinant Colony Stimulating Factor 1, Macrophage (MCSF)**  
**Organism Species: *Homo sapiens (Human)***  
***Instruction manual***

FOR RESEARCH USE ONLY  
NOT FOR USE IN CLINICAL DIAGNOSTIC PROCEDURES

---

13th Edition (Revised in Aug, 2023)

**[ PROPERTIES ]**

**Source:** Prokaryotic expression

**Host:** *E.coli*

**Residues:** Glu33~Ser496

**Tags:** N-terminal His and GST Tag

**Subcellular Location:** Membrane

**Purity:** > 80%

**Traits:** Freeze-dried powder

**Buffer formulation:** PBS, pH7.4, containing 0.01% SKL, 5% Trehalose.

**Original Concentration:** 250µg/mL

**Applications:** Positive Control; Immunogen; SDS-PAGE; WB.

(May be suitable for use in other assays to be determined by the end user.)

**Predicted isoelectric point:** 5.0

**Predicted Molecular Mass:** 80.2kDa

**Accurate Molecular Mass:** 80kDa as determined by SDS-PAGE reducing conditions.

**[ USAGE ]**

Reconstitute in 10mM PBS (pH7.4) to a concentration of 0.1-1.0 mg/mL. Do not vortex.

**[ STORAGE AND STABILITY ]**

**Storage:** Avoid repeated freeze/thaw cycles.

Store at 2-8°C for one month.

Aliquot and store at -80°C for 12 months.

**Stability Test:** The thermal stability is described by the loss rate. The loss rate was determined by accelerated thermal degradation test, that is, incubate the protein at 37°C for 48h, and no obvious degradation and precipitation were observed. The loss rate is less than 5% within the expiration date under appropriate storage condition.

**[ SEQUENCE ]**

```

                                EEVSEYCS HMIGSGHLQS
LQRLIDSQME TSCQITFEFV DQEQLKDPVC YLKKAFLLVQ DIMEDTMRFR
DNTPNIAIAIV QLQELSLRLK SCFTKDYEEL DKACVRTFYE TPLQLLEKVK
NVFNETKNLL DKDWNIFSKN CNNSFAECSS QDVVTKPDCN CLYPKAIPSS
DPASVSPHQP LAPSMAPVAG LTWEDSEGTE GSSLLPGEQP LHTVDPGSAK
QRPPRSTCQS FEPPETPVVK DSTIGGSPQP RPSVGAFNPG MEDILDSAMG
TNWVPEEASG EASEIPVPQG TELSPSRPGG GSMQTEPARP SNFLSASSPL
PASAKGQQPA DVTGTALPRV GPVRPTGQDW NHTPQKTDHP SALLRDPPEP
GSPRISSLRP QGLSNPSTLS AQPQLSRSHS SGSVLPLGEL EGRRSTRDRR
SPAEPGGPA SEGAARPLPR FNSVPLTDG HERQSEGSFS PQLQES

```

**[ IDENTIFICATION ]**

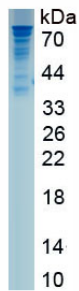


Figure. SDS-PAGE

**[ IMPORTANT NOTE ]**

The kit is designed for research use only, we will not be responsible for any issue if the kit was used in clinical diagnostic or any other procedures.