

**RPA731Hu01 10µg**  
**Recombinant Complement Component 7 (C7)**  
**Organism Species: *Homo sapiens* (Human)**  
***Instruction manual***

FOR RESEARCH USE ONLY  
NOT FOR USE IN CLINICAL DIAGNOSTIC PROCEDURES

---

13th Edition (Revised in Aug, 2023)

**[ PROPERTIES ]**

**Source:** Prokaryotic expression

**Host:** *E.coli*

**Residues:** Ser122~His456

**Tags:** N-terminal His Tag

**Subcellular Location:** Secreted

**Purity:** > 90%

**Traits:** Freeze-dried powder

**Buffer formulation:** PBS, pH7.4, containing 0.01% SKL, 5% Trehalose .

**Original Concentration:** 350µg/mL

**Applications:** Positive Control; Immunogen; SDS-PAGE; WB.

(May be suitable for use in other assays to be determined by the end user.)

**Predicted isoelectric point:** 8.7

**Predicted Molecular Mass:** 43.1kDa

**Accurate Molecular Mass:** 43kDa as determined by SDS-PAGE reducing conditions.

**[ USAGE ]**

Reconstitute in 10mM PBS (pH7.4) to a concentration of 0.1-1.0 mg/mL. Do not vortex.

**[ STORAGE AND STABILITY ]**

**Storage:** Avoid repeated freeze/thaw cycles.

Store at 2-8°C for one month.

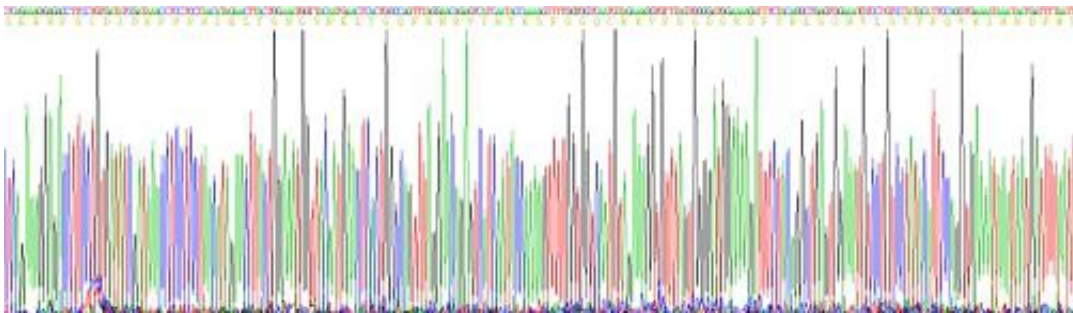
Aliquot and store at -80°C for 12 months.

**Stability Test:** The thermal stability is described by the loss rate. The loss rate was determined by accelerated thermal degradation test, that is, incubate the protein at 37°C for 48h, and no obvious degradation and precipitation were observed. The loss rate is less than 5% within the expiration date under appropriate storage condition.

**[ SEQUENCE ]**

SERRPSCDI DKPPPIELT GNGYNELTGQ FRNRVINTKS FGGQCRKVFS GDGKDFYRLS GNVLSYTFQV KINNDFNYEF  
YNSTWSYVKH TSTEHTSSSR KRSFFRSSSS SSRSYTSHTN EIHKGKSYQL LVVENTVEVA QFINNNPEFL QLAEPFWKEL  
SHLPSLYDYS AYRRLIDQYG THYLQSGSLG GEYRVLFYVD SEKLLQDNFN SVEEKKCKSS GWHFVVKFSS HGCKELENAL  
KAASGTQNNV LRGEPIRGG GAGFISGLSY LEIDNPAGNK RRYSAWAESV TNLPQVIKQK LTPLYELVKE VPCASVKKLY  
LKWALEEYLD EFDPC

**[ IDENTIFICATION ]**



**Figure . Gene Sequencing (extract)**

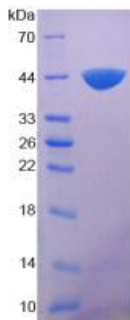


Figure. SDS-PAGE

**[ IMPORTANT NOTE ]**

The kit is designed for research use only, we will not be responsible for any issue if the kit was used in clinical diagnostic or any other procedures.