

RPB306Ra01 100µg
Recombinant Complement Component 8b (C8b)
Organism Species: *Rattus norvegicus* (Rat)
Instruction manual

FOR RESEARCH USE ONLY
NOT FOR USE IN CLINICAL DIAGNOSTIC PROCEDURES

13th Edition (Revised in Aug, 2023)

[PROPERTIES]

Source: Prokaryotic expression

Host: *E.coli*

Residues: Cys161~Arg503

Tags: N-terminal His Tag

Subcellular Location: Secreted

Purity: > 80%

Traits: Freeze-dried powder

Buffer formulation: PBS, pH7.4, containing 0.01% SKL, 5% Trehalose .

Original Concentration: 200µg/mL

Applications: Positive Control; Immunogen; SDS-PAGE; WB.

(May be suitable for use in other assays to be determined by the end user.)

Predicted isoelectric point: 8.1

Predicted Molecular Mass: 43.2kDa

Accurate Molecular Mass: 43kDa as determined by SDS-PAGE reducing conditions.

[USAGE]

Reconstitute in 10mM PBS (pH7.4) to a concentration of 0.1-1.0 mg/mL. Do not vortex.

[STORAGE AND STABILITY]

Storage: Avoid repeated freeze/thaw cycles.

Store at 2-8°C for one month.

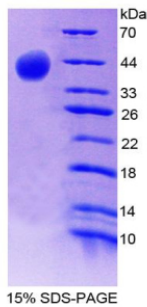
Aliquot and store at -80°C for 12 months.

Stability Test: The thermal stability is described by the loss rate. The loss rate was determined by accelerated thermal degradation test, that is, incubate the protein at 37°C for 48h, and no obvious degradation and precipitation were observed. The loss rate is less than 5% within the expiration date under appropriate storage condition.

[SEQUENCE]

FTNTFEGPVL	DHRYYAGACS	PHYILNTNFR	KPYNVESYTP	CSQDMEQYWA	IGNLASGINL
HNVTEKATSK	SSFKFGFKLD	GLVEFGVRKE	SNEGRHYISR	QTQGKYEFAL	TEYESYDFE
AHYKLSRQL	MLHYEFLQRV	KSLPLEYSYG	EYRDLLRDFG	TKRFSHTKSK	FLHARSVLEV
KDAMERGDYT	LDHVSACAGG	GFQIGGNVYK	VYLKLGVSEK	THFITEAVLG	GIYEYTLIMN
DLVVLVRGGT	SEYITSLAYK	DLPTAELMKE	WGDAVQYNPA	KCSDILNEIK	DRNKRRTMVE
SSTVKQNMKK	ALEEFQMEVS	SCR		IIKLKAEPLY	ELVTATDFAY

[IDENTIFICATION]



[IMPORTANT NOTE]

The kit is designed for research use only, we will not be responsible for any issue if the kit was used in clinical diagnostic or any other procedures.