

RPL327Hu01 10µg

Recombinant Complement Factor H Related Protein 1 (CFHR1)

Organism Species: *Homo sapiens (Human)*

Instruction manual

FOR RESEARCH USE ONLY

NOT FOR USE IN CLINICAL DIAGNOSTIC PROCEDURES

13th Edition (Revised in Aug, 2023)

[PROPERTIES]

Source: Prokaryotic expression

Host: *E.coli*

Residues: Thr205~Lys329

Tags: N-terminal His Tag

Subcellular Location: Secreted

Purity: > 95%

Traits: Freeze-dried powder

Buffer formulation: 20mM Tris, 150mM NaCl, pH8.0, containing 1mM EDTA, 1mM DTT, 0.01% SKL, 5% Trehalose and Proclin300.

Original Concentration: 150µg/mL

Applications: Positive Control; Immunogen; SDS-PAGE; WB.

(May be suitable for use in other assays to be determined by the end user.)

Predicted isoelectric point: 9.0

Predicted Molecular Mass: 17.9kDa

Accurate Molecular Mass: 18kDa as determined by SDS-PAGE reducing conditions.

[USAGE]

Reconstitute in ddH₂O to a concentration of 0.1-1.0 mg/mL. Do not vortex.

[STORAGE AND STABILITY]

Storage: Avoid repeated freeze/thaw cycles.

Store at 2-8°C for one month.

Aliquot and store at -80°C for 12 months.

Stability Test: The thermal stability is described by the loss rate. The loss rate was determined by accelerated thermal degradation test, that is, incubate the protein at 37°C for 48h, and no obvious degradation and precipitation were observed. The loss rate is less than 5% within the expiration date under appropriate storage condition.

[SEQUENCE]

TGKCGP PPPIDNGDIT SFPLSVYAPA SSVEYQCQNL YQLEGNKRIT
 CRNGQWSEPP KCLHPCVISR EIMENYNIAL RWTAKQKLYL RTGESAEFVC
 KRGYRLSSRS HTLRITTCWDG KLEYPTCAK

[IDENTIFICATION]

ATCGGGAAATGGGGCCCGCCCTATGAGAGGGGCACTTACTTCCTCCCGGTGTGAGTATATGCTCCGCTTCTCTAGTGGTACCAATGCGGACTTGTATCACTGGGATACAGGATTAATGATGAGAAATGGTCAATGGCAGACCCCAATCTTACTCTCCGTGTGATATTCGCGGAAATTAAGAAATATATATAGCATTAAGGTCAGCAAGACGAGCTTATTTGG
 T G K C G P P P P I D N G D I T S F P L S V Y A P A S S V E Y Q C Q N L Y Q L E G N K R I T C R N G Q W S E P P K C L H P C V I S R E I M E N Y N I A L R W T A K Q K L Y L R

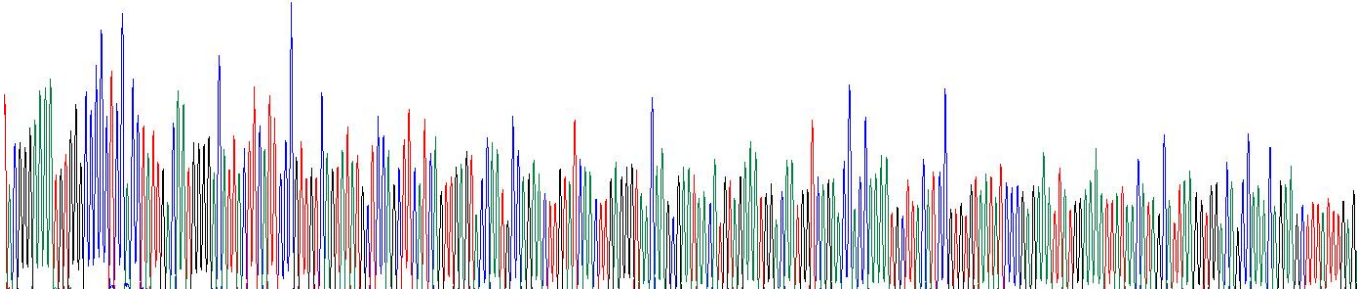


Figure . Gene Sequencing (extract)

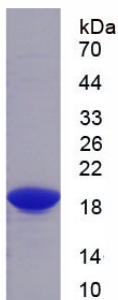


Figure. SDS-PAGE

[IMPORTANT NOTE]

The kit is designed for research use only, we will not be responsible for any issue if the kit was used in clinical diagnostic or any other procedures.