

**RPL331Hu01 200µg**

**Recombinant Complement Factor H Related Protein 5 (CFHR5)**

**Organism Species: *Homo sapiens (Human)***

***Instruction manual***

FOR RESEARCH USE ONLY

NOT FOR USE IN CLINICAL DIAGNOSTIC PROCEDURES

---

12th Edition (Revised in Aug, 2016)

**[ PROPERTIES ]**

**Source:** Prokaryotic expression

**Host:** *E.coli*

**Residues:** Glu19~Glu569

**Tags:** N-terminal His Tag

**Subcellular Location:** Secreted

**Purity:** > 90%

**Traits:** Freeze-dried powder

**Buffer formulation:** PBS, pH7.4, containing 0.01% SKL, 5% Trehalose.

**Original Concentration:** 200µg/mL

**Applications:** Positive Control; Immunogen; SDS-PAGE; WB.

(May be suitable for use in other assays to be determined by the end user.)

**Predicted isoelectric point:** 7.1

**Predicted Molecular Mass:** 66.2kDa

**Accurate Molecular Mass:** 66kDa as determined by SDS-PAGE reducing conditions.

**[ USAGE ]**

Reconstitute in 10mM PBS (pH7.4) to a concentration of 0.1-1.0 mg/mL. Do not vortex.

**[ STORAGE AND STABILITY ]**

**Storage:** Avoid repeated freeze/thaw cycles.

Store at 2-8°C for one month.

Aliquot and store at -80°C for 12 months.

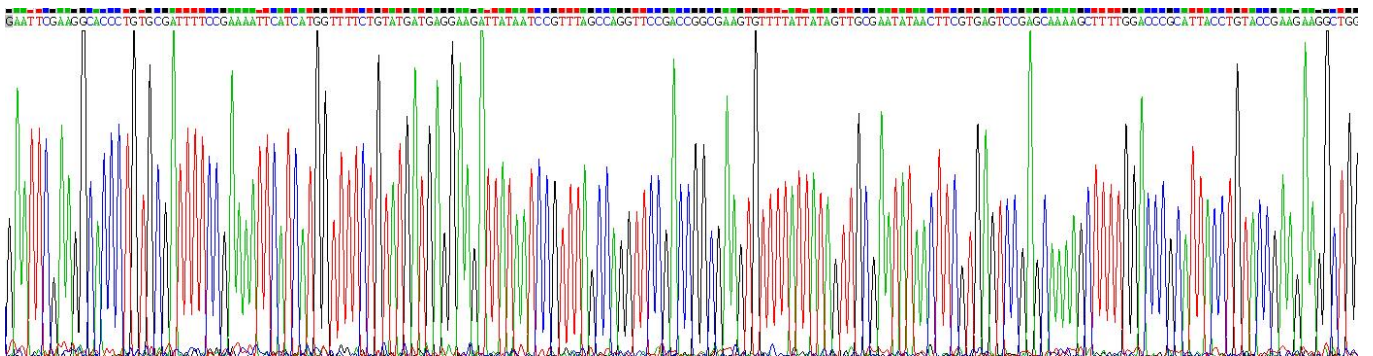
**Stability Test:** The thermal stability is described by the loss rate. The loss rate was determined by accelerated thermal degradation test, that is, incubate the protein at 37°C for 48h, and no obvious degradation and precipitation were observed. The loss rate is less than 5% within the expiration date under appropriate storage condition.

**[ SEQUENCE ]**

```

          EG TLCDFPKIHH GFLYDEEDYN PFSQVPTGEV
FYYSCEYNFV SPSKSFWTRI TCTEEGWSPT PKCLRMCSFP FVKNHGSESS
GLIHLEGDTV QIICNTGYSL QNNEKNISCV ERGWSTPPIC SFTKGECHVP
ILEANVDAQP KKESYKVGDV LKFSCRKNLI RVGSDSVQCY QFGWSPNFPT
CKGQVRSCGP PPQLSNGEVK EIRKEEYGHN EVVEYDCNPN FIINGPKKIQ
CVDGEWTTLP TCVEQVKTCG YIPELEYGYV QPSVPPYQHG VSVEVNCRNE
YAMIGNNMIT CINGIWTELP MCVATHQLKR CKIAGVNIKT LLKLSGKEFN
HNSRIRYRCS DIFRYRHSVC INGKWNPEVD CTEKREQFCP PPPQIPNAQN
MTTTVNYQDG EKVAVLCKEN YLLPEAKEIV CKDGRWQSLP RCVESTAYCG
PPPSINNGDT TSFPLSVYPP GSTVTYRCQS FYKLQGSVTV TCRNKQWSEP
PRCLDPCVVS EENMNKNNIQ LKWRNDGKLY AKTGDAVEFQ CKFPHKAMIS
SPPFRAICQE GKFEYPICE
    
```

**[ IDENTIFICATION ]**



**Figure . Gene Sequencing (extract)**

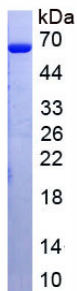


Figure. SDS-PAGE

**[ IMPORTANT NOTE ]**

The kit is designed for research use only, we will not be responsible for any issue if the kit was

used in clinical diagnostic or any other procedures.