

**RPA783Mu03 100µg**  
**Recombinant Complement Factor P (CFP)**  
**Organism Species: *Mus musculus* (Mouse)**  
***Instruction manual***

FOR RESEARCH USE ONLY  
NOT FOR USE IN CLINICAL DIAGNOSTIC PROCEDURES

---

12th Edition (Revised in Aug, 2016)

**[ PROPERTIES ]**

**Source:** Prokaryotic expression

**Host:** *E.coli*

**Residues:** Ser23~Pro464

**Tags:** N-terminal His Tag

**Subcellular Location:** Secreted

**Purity:** > 80%

**Traits:** Freeze-dried powder

**Buffer formulation:** 20mM Tris, 150mM NaCl, pH8.0, containing 1mM EDTA, 1mM DTT, 0.01% SKL, 5% Trehalose and Proclin300.

**Original Concentration:** 200µg/mL

**Applications:** Positive Control; Immunogen; SDS-PAGE; WB.

(May be suitable for use in other assays to be determined by the end user.)

**Predicted isoelectric point:** 7.9

**Predicted Molecular Mass:** 51.6kDa

**Accurate Molecular Mass:** 52kDa as determined by SDS-PAGE reducing conditions.

**[ USAGE ]**

Reconstitute in 20mM Tris, 150mM NaCl (pH8.0) to a concentration of 0.1-1.0 mg/mL. Do not vortex.

**[ STORAGE AND STABILITY ]**

**Storage:** Avoid repeated freeze/thaw cycles.

Store at 2-8°C for one month.

Aliquot and store at -80°C for 12 months.

**Stability Test:** The thermal stability is described by the loss rate. The loss rate was determined by accelerated thermal degradation test, that is, incubate the protein at 37°C for 48h, and no obvious degradation and precipitation were observed. The loss rate is less than 5% within the expiration date under appropriate storage condition.

**[ SEQUENCE ]**

		SDPVLCFT	QYEESGRCK	GLLGRDIRVE
DCCLNAAYAF	QEHGGGLCQA	CRSPQWSAWS	LWGPCSVTCS	EGSQLRHRRRC
VGRGGQCSSEN	VAPGTLEWQL	QACEDQPCCP	EMGGWSEWGP	WGPCSVTCSK
GTQIRQRVCD	NPAPKCGGHC	PGEAQQSQAC	DTQKTCPTHG	AWASWGPWSP
CSGSCLGGAQ	EPKETRSRSC	SAPAPSHQPP	GKPCSGPAYE	HKACSGLPPC
PVAGGWGPWS	PLSPCSVTCG	LGQTLEQRTC	DHPAPRHGGP	FCAGDATRNO
MCNKAVPCPV	NGEWEAWGKW	SDCSRRLRMSI	NCEGTPGQQS	RSRSCGGRKF
NGKPCAGKLQ	DIRHCYNIHN	CIMKGSWSQW	STWSLCTPPC	SPNATRVQR
LCTPLLPKYP	PTVSMVEGQG	EKNVTFWGTP	RPLCEALQGQ	KLVVEEKRSC
LHVPVCKDPE	EKKP			

**[ IDENTIFICATION ]**

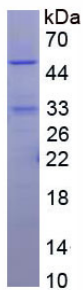


Figure. SDS-PAGE

**[ IMPORTANT NOTE ]**

The kit is designed for research use only, we will not be responsible for any issue if the kit was used in clinical diagnostic or any other procedures.