

RPA010Hu03 100µg

Recombinant Connective Tissue Growth Factor (CTGF)

Organism Species: *Homo sapiens (Human)*

Instruction manual

FOR RESEARCH USE ONLY

NOT FOR USE IN CLINICAL DIAGNOSTIC PROCEDURES

13th Edition (Revised in Aug, 2023)

[**PROPERTIES**]

Source: Prokaryotic expression

Host: *E.coli*

Residues: Gln27~Ala349

Tags: N-terminal His and GST Tag

Subcellular Location: Secreted, Extracellular matrix

Purity: > 80%

Traits: Freeze-dried powder

Buffer formulation: 20mM Tris, 150mM NaCl, pH8.0, containing 1mM EDTA, 1mM DTT, 0.01% SKL, 5% Trehalose and Proclin300.

Original Concentration: 200µg/mL

Applications: Positive Control; Immunogen; SDS-PAGE; WB.

(May be suitable for use in other assays to be determined by the end user.)

Predicted isoelectric point: 7.9

Predicted Molecular Mass: 65.5kDa

Accurate Molecular Mass: 65kDa as determined by SDS-PAGE reducing conditions.

[**USAGE**]

Reconstitute in 20mM Tris, 150mM NaCl (pH8.0) to a concentration of 0.1-1.0 mg/mL. Do not vortex.

[**STORAGE AND STABILITY**]

Storage: Avoid repeated freeze/thaw cycles.

Store at 2-8°C for one month.

Aliquot and store at -80°C for 12 months.

Stability Test: The thermal stability is described by the loss rate. The loss rate was determined by accelerated thermal degradation test, that is, incubate the protein at 37°C for 48h, and no obvious degradation and precipitation were observed. The loss rate is less than 5% within the expiration date under appropriate storage condition.

[SEQUENCE]

			QNCS	GPCRCPDEPA	PRCPAGVSLV
LDGCGCCRV	AKQLGELCTE	RDPCDPHKGL	FCHFGSPANR	KIGVCTAKDG	
APCIFGGTVY	RSGESFQSSC	KYQCTCLDGA	VGCMP LCSMD	VRLPSPDCPF	
PRRVKLPGKC	CEEWCDEPK	DQTVVGPALA	AYRLEDTFGP	DPTMIRANCL	
VQTTEWSACS	KTCGMGISTR	VTNDNASRL	EKQSRLCMVR	PCEADLEENI	
KKGKKCIRTP	KISKPIKFEL	SGCTSMKTYR	AKFCGVCTDG	RCCTPHRTTT	
LPVEFKCPDG	EVMKKNMMFI	KTCACHYNCP	GDNDIFESLY	YRKMYGDMA	

[IDENTIFICATION]

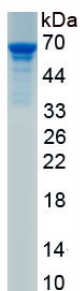


Figure. SDS-PAGE

[IMPORTANT NOTE]

The kit is designed for research use only, we will not be responsible for any issue if the kit was used in clinical diagnostic or any other procedures.