

**RPC401Hu01 50µg**  
**Recombinant Corticotropin Releasing Hormone Binding Protein (CRHBP)**  
**Organism Species: *Homo sapiens (Human)***  
***Instruction manual***

FOR RESEARCH USE ONLY  
NOT FOR USE IN CLINICAL DIAGNOSTIC PROCEDURES

---

12th Edition (Revised in Aug, 2016)

**[ PROPERTIES ]**

**Source:** Prokaryotic expression

**Host:** *E.coli*

**Residues:** Tyr25~Leu322

**Tags:** N-terminal His Tag

**Subcellular Location:** Secreted

**Purity:** > 90%

**Traits:** Freeze-dried powder

**Buffer formulation:** 20mM Tris, 150mM NaCl, pH8.0, containing 0.01% SKL, 5% Trehalose.

**Original Concentration:** 200µg/mL

**Applications:** Positive Control; Immunogen; SDS-PAGE; WB.

(May be suitable for use in other assays to be determined by the end user.)

**Predicted isoelectric point:** 6.0

**Predicted Molecular Mass:** 37.0kDa

**Accurate Molecular Mass:** 37kDa as determined by SDS-PAGE reducing conditions.

**[ USAGE ]**

Reconstitute in 20mM Tris, 150mM NaCl (pH8.0) to a concentration of 0.1-1.0 mg/mL. Do not vortex.

**[ STORAGE AND STABILITY ]**

**Storage:** Avoid repeated freeze/thaw cycles.

Store at 2-8°C for one month.

Aliquot and store at -80°C for 12 months.

**Stability Test:** The thermal stability is described by the loss rate. The loss rate was determined by accelerated thermal degradation test, that is, incubate the protein at 37°C for 48h, and no obvious degradation and precipitation were observed. The loss rate is less than 5% within the expiration date under appropriate storage condition.

**[ SEQUENCE ]**

YLELRE AADYDPFLLF SANLKRELAG  
EQPYRRALRC LDMLSLQGQF TFTADRPQLH CAFFISEPE EFITIHVDQV  
SIDCQGGDFL KVFQGWILKG EKFPSSQDHP LPSAERYIDF CESGLSRRSI  
RSSQNVAMIF FRVHEPGNGF TLTIKTDPNL FPCNVISQTP NGKFTLVVPH  
QHRNCSFSII YPVVIKISDL TLGHVNGLQL KKSSAGCEGI GDFVELLGGT  
GLDPSKMTPL ADLCYPFHGP AQMKVGCNT VVRMVSSGKH VNRVTFEYRQ  
LEPYELENPN GNSIGEFCLS GL

**[ IDENTIFICATION ]**

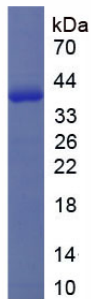


Figure. SDS-PAGE

**[ IMPORTANT NOTE ]**

The kit is designed for research use only, we will not be responsible for any issue if the kit was used in clinical diagnostic or any other procedures.