

RPA109Ca01 1mg

Recombinant Creatine Kinase, Muscle (CKM)

Organism Species: *Canis familiaris*; Canine (Dog)

Instruction manual

FOR RESEARCH USE ONLY

NOT FOR USE IN CLINICAL DIAGNOSTIC PROCEDURES

12th Edition (Revised in Aug, 2016)

[PROPERTIES]

Source: Prokaryotic expression

Host: *E.coli*

Residues: Lys11~Leu367

Tags: N-terminal His Tag

Subcellular Location: Cytoplasm

Purity: > 95%

Traits: Freeze-dried powder

Buffer formulation: PBS, pH7.4, containing 0.01% SKL, 5% Trehalose.

Original Concentration: 400µg/mL

Applications: Positive Control; Immunogen; SDS-PAGE; WB.

(May be suitable for use in other assays to be determined by the end user.)

Predicted isoelectric point: 6.7

Predicted Molecular Mass: 41.7kDa

Accurate Molecular Mass: 42kDa as determined by SDS-PAGE reducing conditions.

[USAGE]

Reconstitute in 10mM PBS (pH7.4) to a concentration of 0.1-1.0 mg/mL. Do not vortex.

[STORAGE AND STABILITY]

Storage: Avoid repeated freeze/thaw cycles.

Store at 2-8°C for one month.

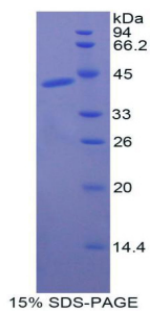
Aliquot and store at -80°C for 12 months.

Stability Test: The thermal stability is described by the loss rate. The loss rate was determined by accelerated thermal degradation test, that is, incubate the protein at 37°C for 48h, and no obvious degradation and precipitation were observed. The loss rate is less than 5% within the expiration date under appropriate storage condition.

[SEQUENCE]

KLNYKPEEEY PDLTKHNNHM AKALTPEIYK KLRDKETPSG
FTLDDVIQTG VDNPGHPFIM TVGCVAGDEE SYQVFKDLFD PIIQDRHGGY
KPTDKHKTDL NHENLKGDD LDPNYVLSSR VRTGRSIKGY TLPPHCSRGE
RRAVEKLSIE ALNSLTGEFK GKYYPLKSMT EQEQQLIDD HFLFDKPVSP
LLLASGMARD WPDARGIWHN DNKTFLVWVN EEDHLRVISM QKGGNMKEVF
RRFCVGLQKI EEIFKKAGHP FMWNEHLGYV LTCPSNLGTG LRGGVHVKLA
HLSKHPKFEE ILTRLRLQKR GTGGVDAAV GSVFDISNAD RLGSEVEVQ
QLVVDGVKLM VEMEKKL

[IDENTIFICATION]



[IMPORTANT NOTE]

The kit is designed for research use only, we will not be responsible for any issue if the kit was used in clinical diagnostic or any other procedures.