

**RPD243Hu01 50ug**

**Recombinant Cyclin Dependent Kinase 8 (CDK8)**

**Organism Species: *Homo sapiens (Human)***

***Instruction manual***

FOR RESEARCH USE ONLY

NOT FOR USE IN CLINICAL DIAGNOSTIC PROCEDURES

---

12th Edition (Revised in Aug, 2016)

**[ PROPERTIES ]**

**Source:** Prokaryotic expression

**Host:** *E.coli*

**Residues:** Glu21~Asp392

**Tags:** N-terminal His Tag

**Subcellular Location:** Nucleus

**Purity:** > 95%

**Traits:** Freeze-dried powder

**Buffer formulation:** PBS, pH7.4, containing 0.01% SKL, 5% Trehalose.

**Original Concentration:** 150µg/mL

**Applications:** Positive Control; Immunogen; SDS-PAGE; WB.

(May be suitable for use in other assays to be determined by the end user.)

**Predicted isoelectric point:** 8.5

**Predicted Molecular Mass:** 46.7kDa

**Accurate Molecular Mass:** 47kDa as determined by SDS-PAGE reducing conditions.

**[ USAGE ]**

Reconstitute in 10mM PBS (pH7.4) to a concentration of 0.1-1.0 mg/mL. Do not vortex.

**[ STORAGE AND STABILITY ]**

**Storage:** Avoid repeated freeze/thaw cycles.

Store at 2-8°C for one month.

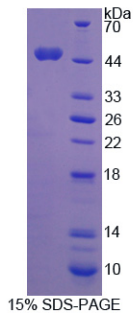
Aliquot and store at -80°C for 12 months.

**Stability Test:** The thermal stability is described by the loss rate. The loss rate was determined by accelerated thermal degradation test, that is, incubate the protein at 37°C for 48h, and no obvious degradation and precipitation were observed. The loss rate is less than 5% within the expiration date under appropriate storage condition.

**[ SEQUENCE ]**

	EYEGCKVGRG	TYGHVYKAKR	KDGKDDKDYA
LKQIEGTGIS	MSACREIALL	RELKHPNVIS	LQKVFLSHAD
EHDLWHIIKF	HRASKANKKP	VQLPRGMVKS	LLYQILDGIH
DLKPANILVM	GEGPERGRVK	IADMGFARLF	NSPLKPLADL
APELLGARGH	YTKAIDIWAI	GCIFAELLTS	EPIFHCRQED
QLDRIFNVMG	FPADKDWEDI	KKMPEHSTLM	KDFRRNTYTN
KVKPDSKAFH	LLQKLLTMDP	IKRITSEQAM	QDPYFLEDPL
IPYPKREFLT	EEEPDDKGDK	KNQQQQQGNN	HTNGTGHPGN
			QD

**[ IDENTIFICATION ]**



**[ IMPORTANT NOTE ]**

The kit is designed for research use only, we will not be responsible for any issue if the kit was used in clinical diagnostic or any other procedures.