

RPD863Hu01 50µg

Recombinant Cysteine Conjugate Beta Lyase, Cytoplasmic (CCbL1)

Organism Species: *Homo sapiens (Human)*

Instruction manual

FOR RESEARCH USE ONLY

NOT FOR USE IN CLINICAL DIAGNOSTIC PROCEDURES

12th Edition (Revised in Aug, 2016)

[PROPERTIES]

Source: Prokaryotic expression

Host: *E.coli*

Residues: Met1~Leu422

Tags: N-terminal His Tag

Subcellular Location: Cytoplasm

Purity: > 97%

Traits: Freeze-dried powder

Buffer formulation: 20mM Tris, 150mM NaCl, pH8.0, containing 0.01% skl, 5%Trehalose.

Original Concentration: 250µg/mL

Applications: Positive Control; Immunogen; SDS-PAGE; WB.

(May be suitable for use in other assays to be determined by the end user.)

Predicted isoelectric point: 6.0

Predicted Molecular Mass: 51.6kDa

Accurate Molecular Mass: 52kDa as determined by SDS-PAGE reducing conditions.

[USAGE]

Reconstitute in 20mM Tris, 150mM NaCl (pH8.0) to a concentration of 0.1-1.0 mg/mL. Do not vortex.

[STORAGE AND STABILITY]

Storage: Avoid repeated freeze/thaw cycles.

Store at 2-8°C for one month.

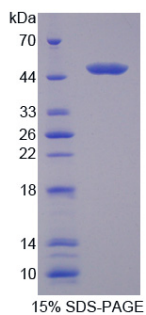
Aliquot and store at -80°C for 12 months.

Stability Test: The thermal stability is described by the loss rate. The loss rate was determined by accelerated thermal degradation test, that is, incubate the protein at 37°C for 48h, and no obvious degradation and precipitation were observed. The loss rate is less than 5% within the expiration date under appropriate storage condition.

[SEQUENCE]

MAKQLQARRL DGIDYNPWVE FVKLASEHDV VNLGQGFPDF PPPDFAVEAF
QHAVSGDFML NQYTKTFGYP PLTKILASFF GELLGQEIDP LRNVLVTVGG
YGALFTAFQA LVDEGDEVII IEPFFDCYEP MTMMAGGRP VVSLKPGPIQ
NGELGSSSNW QLDPMELAGK FTSRTKALVL NTPNNPLGKV FSREELELVA
SLCQQHDVVC ITDEVYQWMV YDGHQHISIA SLPGMWERTL TIGSAGKTFS
ATGWKVGWVL GPDHIMKHLR TVHQNSVFHC PTQSQAABAE SFEREQLLFR
QPSSYFVQFP QAMQRCRDHM IRSLQSVGLK PIIPQGSYFL ITDISDFKRK
MPDLPGAVDE PYDRRFVKWM IKNKGLVAIP VSIFYSVPHQ KHFDHYIRFC
FVKDEATLQA MDEKLRKWKV EL

[IDENTIFICATION]



[IMPORTANT NOTE]

The kit is designed for research use only, we will not be responsible for any issue if the kit was used in clinical diagnostic or any other procedures.