

**RPG143Hu01 100µg**

**Recombinant Cysteinyl tRNA Synthetase 2, Mitochondrial (CARS2)**

**Organism Species: *Homo sapiens (Human)***

***Instruction manual***

FOR RESEARCH USE ONLY

NOT FOR USE IN CLINICAL DIAGNOSTIC PROCEDURES

---

13th Edition (Revised in Aug, 2023)

**[ PROPERTIES ]**

**Source:** Prokaryotic expression

**Host:** *E.coli*

**Residues:** Ile260~Gly564

**Tags:** N-terminal His Tag

**Subcellular Location:** Mitochondrion

**Purity:** > 90%

**Traits:** Freeze-dried powder

**Buffer formulation:** PBS, pH7.4, containing 0.01% SKL, 5% Trehalose.

**Original Concentration:** 200µg/mL

**Applications:** Positive Control; Immunogen; SDS-PAGE; WB.

(May be suitable for use in other assays to be determined by the end user.)

**Predicted isoelectric point:** 6.9

**Predicted Molecular Mass:** 37.7kDa

**Accurate Molecular Mass:** 38kDa as determined by SDS-PAGE reducing conditions.

**[ USAGE ]**

Reconstitute in 10mM PBS (pH7.4) to a concentration of 0.1-1.0 mg/mL. Do not vortex.

**[ STORAGE AND STABILITY ]**

**Storage:** Avoid repeated freeze/thaw cycles.

Store at 2-8°C for one month.

Aliquot and store at -80°C for 12 months.

**Stability Test:** The thermal stability is described by the loss rate. The loss rate was determined by accelerated thermal degradation test, that is, incubate the protein at 37°C for 48h, and no obvious degradation and precipitation were observed. The loss rate is less than 5% within the expiration date under appropriate storage condition.

**[ SEQUENCE ]**

I ASMVFGSQLD IHSGGIDLAF PHHENEIAQC EVFHQCEQWG  
NYFLHSGHLH AKGKEEKMSK SLKNYITIKD FLKTFSPDVF RFFCLRSSYR  
SAIDYSDSAM LQAQQLLLGL GSFLEDARAY MKGQLACGSV REAMLWERLS  
STKRAVKAAL ADDFDTPRVV DAILGLAHHG NGQLRASLKE PEGPRSPAVF  
GAIISYFEQF FETVGISLAN QQYVSGDGSE ATLHGVVDEL VRFRQKVRQF  
ALAMPEATGD ARRQQLLERQ PLLEACDTRL RGLTAHGINI KDRSSTTSTW  
ELLDQRTKDQ KSAG

**[ IDENTIFICATION ]**

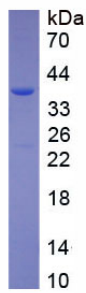


Figure. SDS-PAGE

**[ IMPORTANT NOTE ]**

The kit is designed for research use only, we will not be responsible for any issue if the kit was used in clinical diagnostic or any other procedures.