

RPA492Mu01 50µg

Recombinant Cytokeratin 1 (CK1)

Organism Species: *Mus musculus* (Mouse)

Instruction manual

FOR RESEARCH USE ONLY

NOT FOR USE IN CLINICAL DIAGNOSTIC PROCEDURES

13th Edition (Revised in Aug, 2023)

[PROPERTIES]

Source: Prokaryotic expression

Host: *E.coli*

Residues: Arg189~Glu497

Tags: N-terminal His Tag

Subcellular Location: Secreted

Purity: > 97%

Traits: Freeze-dried powder

Buffer formulation: PBS, pH7.4, containing 0.05% SKL, 1mM DTT, 5% Trehalose and Proclin300.

Original Concentration: 200µg/mL

Applications: Positive Control; Immunogen; SDS-PAGE; WB.

(May be suitable for use in other assays to be determined by the end user.)

Predicted isoelectric point: 5.1

Predicted Molecular Mass: 37.4kDa

Accurate Molecular Mass: 36kDa as determined by SDS-PAGE reducing conditions.

[USAGE]

Reconstitute in 10mM PBS (pH7.4) to a concentration of 0.1-1.0 mg/mL. Do not vortex.

[STORAGE AND STABILITY]

Storage: Avoid repeated freeze/thaw cycles.

Store at 2-8°C for one month.

Aliquot and store at -80°C for 12 months.

Stability Test: The thermal stability is described by the loss rate. The loss rate was determined by accelerated thermal degradation test, that is, incubate the protein at 37°C for 48h, and no obvious degradation and precipitation were observed. The loss rate is less than 5% within the expiration date under appropriate storage condition.

[SEQUENCE]

```

RE QIKSLNDKFA
SFIDKVRFL E QQNQVLQTKW ELLQQVDTTT RTQNLDPFFE NYISILRRKV
DSLKSDQSRM DSELKNMQDL VEEYRTKYED EINKRTNAEN EFVTIKKDVD
SAYMTKVELQ AKADALQQDI DFFSALYQME MSQMOTQISE TNVLSMDNN
RSLDLGIIIS EVKAQYDSIC QRSKAEAEF YQSKYEELQI TAGKHGDSVR
NTKMEISELN RMIQRLRSEI DGCKKQISQI QQNINDAEQR GEKALKDAQN
KLNEIEDALS QCKEDLARLL RDFQELMNTK LALDMEIATY KKLLEGE
    
```

[IDENTIFICATION]

G A A T T C G A G A G C A G A T C A A G T C A C T C A A T G A C A A G T T T G C C T C C T T C A T C G A C A A G G T G C G C T T C T A G A G C A C A A A A C C A G G T G C T A C A A A C C A A A T G G G A G C T G C T G C A G C A G G T A G A C C A C A A C C C G G A C C A A A A C T T A G A C C C T T T T T T G A G A A C T A T A T C A G C A

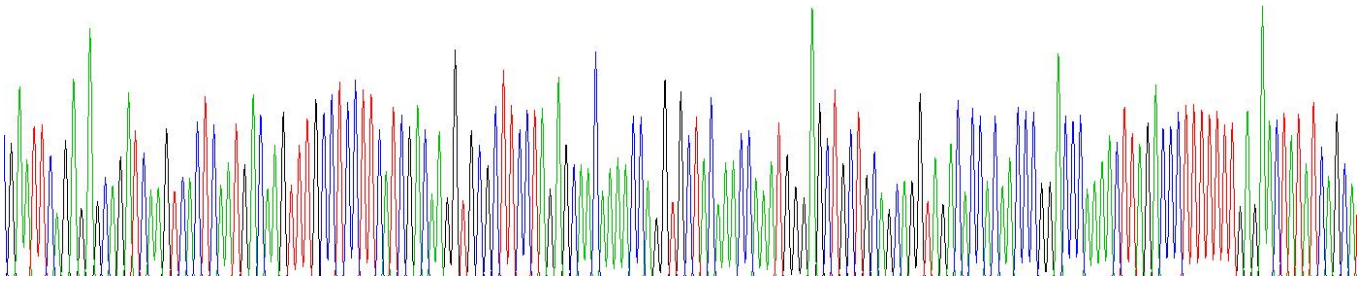
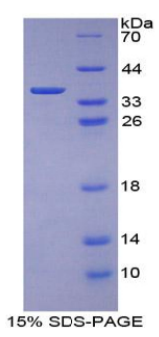


Figure . Gene Sequencing (extract)



[IMPORTANT NOTE]

The kit is designed for research use only, we will not be responsible for any issue if the kit was used in clinical diagnostic or any other procedures.