

RPB231Hu02 200ug

Recombinant Cytokeratin 18 (CK18)

Organism Species: *Homo sapiens (Human)*

Instruction manual

FOR RESEARCH USE ONLY

NOT FOR USE IN CLINICAL DIAGNOSTIC PROCEDURES

12th Edition (Revised in Aug, 2016)

[PROPERTIES]

Source: Prokaryotic expression

Host: *E.coli*

Residues: Ser2~His430

Tags: N-terminal His Tag

Subcellular Location: Nucleus

Purity: > 80%

Traits: Freeze-dried powder

Buffer formulation: PBS, pH7.4, containing 0.01% SKL, 5% Trehalose.

Original Concentration: 250µg/mL

Applications: Positive Control; Immunogen; SDS-PAGE; WB.

(May be suitable for use in other assays to be determined by the end user.)

Predicted isoelectric point: 5.1

Predicted Molecular Mass: 51.6kDa

Accurate Molecular Mass: 52kDa as determined by SDS-PAGE reducing conditions.

[USAGE]

Reconstitute in 10mM PBS (pH7.4) to a concentration of 0.1-1.0 mg/mL. Do not vortex.

[STORAGE AND STABILITY]

Storage: Avoid repeated freeze/thaw cycles.

Store at 2-8°C for one month.

Aliquot and store at -80°C for 12 months.

Stability Test: The thermal stability is described by the loss rate. The loss rate was determined by accelerated thermal degradation test, that is, incubate the protein at 37°C for 48h, and no obvious degradation and precipitation were observed. The loss rate is less than 5% within the expiration date under appropriate storage condition.

[SEQUENCE]

SFTTRSTFS TNYRSLGSVQ APSYGARPVS SAASVYAGAG GSGSRISVSR
 STSFRGGMGS GGLATGIAGG LAGMGGIQNE KETMQLNDR LASYLDRVRS
 LETENRRLES KIREHLEKKG PQVRDWSHYF KIIEDLRAQI FANTVDNARI
 VLQIDNARLA ADDFRVKYET ELAMRQSVEN DIHGLRKVID DTNITRLQLE
 TEIEALKEEL LFMKKNHEEE VKGLQAQIAS SGLTVEVDAP KSQDLAKIMA
 DIRAQYDELA RKNREELDKY WSQQIEESTT VVTTQSAEVG AAETTLTELR
 RTVQSLEIDL DSMRNLKASL ENSLREVEAR YALQMEQLNG ILLHLESELA
 QTRAEGQRQA QEYEALLNIK VKLEAEIATY RRLLEDGEDF NLGDALDSSN
 SMQTIQKTTT RRIVDGKVVS ETNDTKVLRH

[IDENTIFICATION]

AGATTCAAGCTTCACACTCGCTCCACCTTCTCGACCACTAACGGTCCCTGGCTCTGTCCAGGGCCCAAGCTACGGGCCCGGCCGTCAAGCAGCGCGGCCAAGCGTCTATGCAAGCGCTGGGGGCTCTGGGTTCGGGATCTCCGTTGTCGGCTCCACCAAGCTTCAAGGGCGGCATGGG

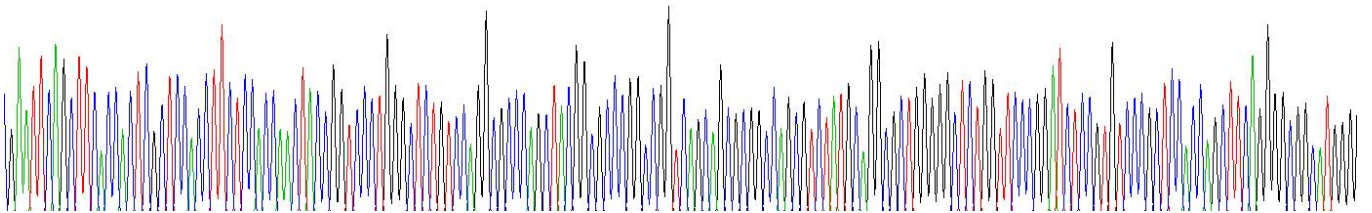


Figure . Gene Sequencing (extract)

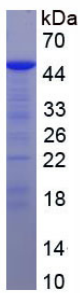


Figure. SDS-PAGE

[IMPORTANT NOTE]

The kit is designed for research use only, we will not be responsible for any issue if the kit was used in clinical diagnostic or any other procedures.