

RPB231Ra01 10µg

Recombinant Cytokeratin 18 (CK18)

Organism Species: *Rattus norvegicus* (Rat)

Instruction manual

FOR RESEARCH USE ONLY

NOT FOR USE IN CLINICAL DIAGNOSTIC PROCEDURES

13th Edition (Revised in Aug, 2023)

[PROPERTIES]

Source: Prokaryotic expression

Host: *E.coli*

Residues: Glu72~Gly380

Tags: N-terminal His Tag

Subcellular Location: Nucleus, Cytoplasm

Purity: > 97%

Traits: Freeze-dried powder

Buffer formulation: 20mM Tris, 150mM NaCl, pH8.0, containing 1mM EDTA, 1mM DTT, 0.01% SKL, 5% Trehalose and Proclin300.

Original Concentration: 200µg/mL

Applications: Positive Control; Immunogen; SDS-PAGE; WB.

(May be suitable for use in other assays to be determined by the end user.)

Predicted isoelectric point: 5.2

Predicted Molecular Mass: 39.6kDa

Accurate Molecular Mass: 40kDa as determined by SDS-PAGE reducing conditions.

[USAGE]

Reconstitute in 20mM Tris, 150mM NaCl (pH8.0) to a concentration of 0.1-1.0 mg/mL. Do not vortex.

[STORAGE AND STABILITY]

Storage: Avoid repeated freeze/thaw cycles.

Store at 2-8°C for one month.

Aliquot and store at -80°C for 12 months.

Stability Test: The thermal stability is described by the loss rate. The loss rate was determined by accelerated thermal degradation test, that is, incubate the protein at 37°C for 48h, and no obvious degradation and precipitation were observed. The loss rate is less than 5% within the expiration date under appropriate storage condition.

[SEQUENCE]

```

                                EKETMQDLN DRLASYLDKV KNLETENRRL
ESKIREYLEK RGPQGV RDWG HYFKTIEDLR AQIFANSVDN ARIVLQIDNA
RLAADDFRVK YETELAMRQS VESDIHGLRK VVDDTNITRL QLETEIEALK
EELLFMKNH EEEVQGLEAQ IASSGLTVEV DAPKSQDLSK IMADIRAQYE
QLAQKNREEL DKYWSQIEE STTVVTKSA EIRDAETLL ELRRTLQTL
IDLDSMKNQN INLENNLGEV EARYRVQMEQ LNGVLLHLES ELAQTRAEGQ
RQTQEYEALL NIKVKLEAEI ATYRRLEDG
    
```

[IDENTIFICATION]

GGATCCGAGAAAGGAGACCATGCAGAACCTGAAACGCTGGCCAGCTACCTAGACAAAGTGAAGAACCTGGAAACCGAGAACAGGAGACTAGAGAGCAAATCCGGGAAATCTGGAGAAAAGGGTCCCAAGGCGTCAAGACTGGGGCACTACTTCAAGACCATCGAAGATCTC

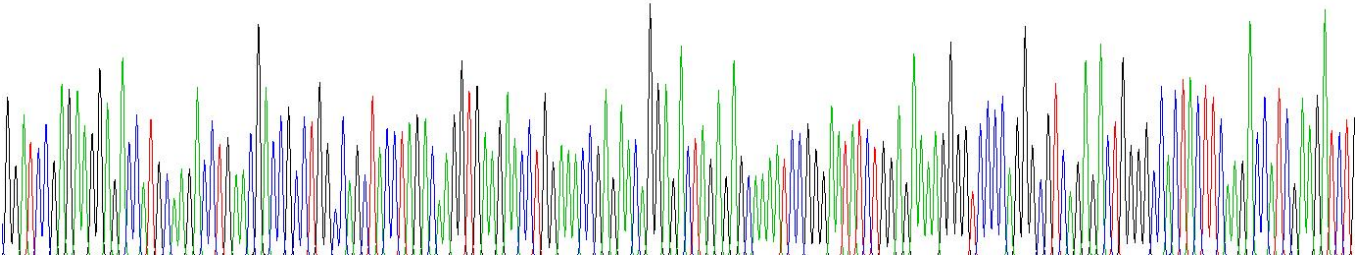


Figure . Gene Sequencing (extract)

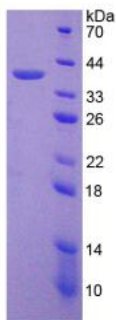


Figure. SDS-PAGE

[IMPORTANT NOTE]

The kit is designed for research use only, we will not be responsible for any issue if the kit was used in clinical diagnostic or any other procedures.