

RPD909Hu01 1

Recombinant Dipeptidyl Peptidase 7 (DPP7)

Organism Species: *Homo sapiens* (Human)

Instruction manual

FOR RESEARCH USE ONLY

NOT FOR USE IN CLINICAL DIAGNOSTIC PROCEDURES

13th Edition (Revised in Aug, 2023)

[PROPERTIES]

Source: Prokaryotic expression

Host: *E.coli*

Residues: Asp28~Gly486

Tags: N-terminal His Tag

Subcellular Location: Secreted, Cytoplasm

Purity: > 90%

Traits: Freeze-dried powder

Buffer formulation: PBS, pH7.4, containing 0.01% SKL, 5% Trehalose.

Original Concentration: 100µg

Applications: Positive Control; Immunogen; SDS-PAGE; WB.

(May be suitable for use in other assays to be determined by the end user.)

Predicted isoelectric point: 5.5

Predicted Molecular Mass: 54.7kDa

Accurate Molecular Mass: 55kDa as determined by SDS-PAGE reducing conditions.

[USAGE]

Reconstitute in 10mM PBS (pH7.4) to a concentration of 0.1-1.0 mg/mL. Do not vortex.

[STORAGE AND STABILITY]

Storage: Avoid repeated freeze/thaw cycles.

Store at 2-8°C for one month.

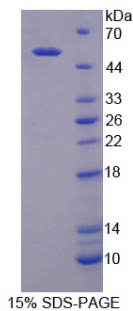
Aliquot and store at -80°C for 12 months.

Stability Test: The thermal stability is described by the loss rate. The loss rate was determined by accelerated thermal degradation test, that is, incubate the protein at 37°C for 48h, and no obvious degradation and precipitation were observed. The loss rate is less than 5% within the expiration date under appropriate storage condition.

[SEQUENCE]

DPG FQERFFQURL DHFNFERFCN
KTFFPQRFLVS DRFWVRGEGP IFFYTGNEGD VWAFANNSAF VAELAAERGA
LLVFAEHRYG GKSLPFGAQS TQRGHTELLT VEQALADFAE LLRALRRDLG
AQDAPAIAFG GSYGGMLSAY LRMKYPHLVA GALAASAPVL AVAGLGDSNQ
FFRDVTADFE QQSPKCTQGV REAFRQIKDL FLQGAYDTRV WEFGTCQPLS
DEKDLTQLFM FARNAFTVLA MMDYPYPTDF LGPLPANPVK VGCDRLLSEA
QRITGLRALA GLVYNASGSE HCYDIYRLYH SCADPTGCGT GPDARAWDYQ
ACTEINLTFA SNNVTDMPFD LPFTDELQRQ YCLDTWGVWP RPDWLLTSFW
GGDLRAASNI IFSNGNLDPW AGGGIRRNLG ASVIAVTIQG GAHHLDRAS
HPEDPASVVE ARKLEATIIG EWWKAARREQ QPALRG

[IDENTIFICATION]



[IMPORTANT NOTE]

The kit is designed for research use only, we will not be responsible for any issue if the kit was used in clinical diagnostic or any other procedures.