

RPQ266Hu01 100ug

Recombinant EGF Like Repeats And Discoidin I Like Domains Protein 3 (EDIL3)

Organism Species: *Homo sapiens (Human)*

Instruction manual

FOR RESEARCH USE ONLY

NOT FOR USE IN CLINICAL DIAGNOSTIC PROCEDURES

13th Edition (Revised in Aug, 2023)

[PROPERTIES]

Source: Prokaryotic expression

Host: *E.coli*

Residues: Asp24~Glu480

Tags: N-terminal His Tag

Subcellular Location: Secreted

Purity: > 90%

Traits: Freeze-dried powder

Buffer formulation: PBS, pH7.4, containing 0.01% SKL, 5% Trehalose.

Original Concentration: 200µg/mL

Applications: Positive Control; Immunogen; SDS-PAGE; WB.

(May be suitable for use in other assays to be determined by the end user.)

Predicted isoelectric point: 6.8

Predicted Molecular Mass: 55.0kDa

Accurate Molecular Mass: 55kDa as determined by SDS-PAGE reducing conditions.

[USAGE]

Reconstitute in 10mM PBS (pH7.4) to a concentration of 0.1-1.0 mg/mL. Do not vortex.

[STORAGE AND STABILITY]

Storage: Avoid repeated freeze/thaw cycles.

Store at 2-8°C for one month.

Aliquot and store at -80°C for 12 months.

Stability Test: The thermal stability is described by the loss rate. The loss rate was determined by accelerated thermal degradation test, that is, incubate the protein at 37°C for 48h, and no obvious degradation and precipitation were observed. The loss rate is less than 5% within the expiration date under appropriate storage condition.

[SEQUENCE]

DICDPNPCENGGICLPLGADGSFSCECPDGFTDPNCSSVVEVASDEEEPT SAGPCTPNPCHNGGTCEI SEAYRGDTFIGYVCKCPRGFNG
 IHCQHNI NECEVEPCKNGGICTDLVANY SCECPGEFMGRNCQYKCSGPLGIEGGI ISNQQITASSTHRALFGLQKWYPYARLNKKGLIN
 AWTAAENDRWPWIQINLQRKMRVTGVITQGAKRIGSPEYIKSYKIAYSNDGKTWAMYKVKGTNEDMVFRGNIDNNTPYANSFTPPIKAQY
 VRLYPQVCRRHCTLRMELLGCELSGCSEPLGMKSGHIQDYQITASSIFRTL NMDMFTWEPRKARLDKQGKVNAWTSGHNDQSQWLQVDLL
 VPTKVTGIITQGAKDFGHVQFVGSYKLAYSNDGEHWTVYQDEKQRKDKVFQGNFDNDTHRKNVIDPPIYARHIRILPWSWYGRITLRSEL
 LGCTEEE

[IDENTIFICATION]

G A T T C A T T T T G G T C C A T C A T C G A A T G G A T C T G T T C C G G A T T G G T G A T G T C T T T C T G G G T C C A G T G G T T C A C G C C C A C T G T C A G G T T G G G G T T G C C T C C C T C C A T C C A T C C A T A T G G A C C T G G A A T A G C A C A T C C G G G G A C A T T C A T A G C C A T G T T T G A A T G T C C C G G A T T A T G G

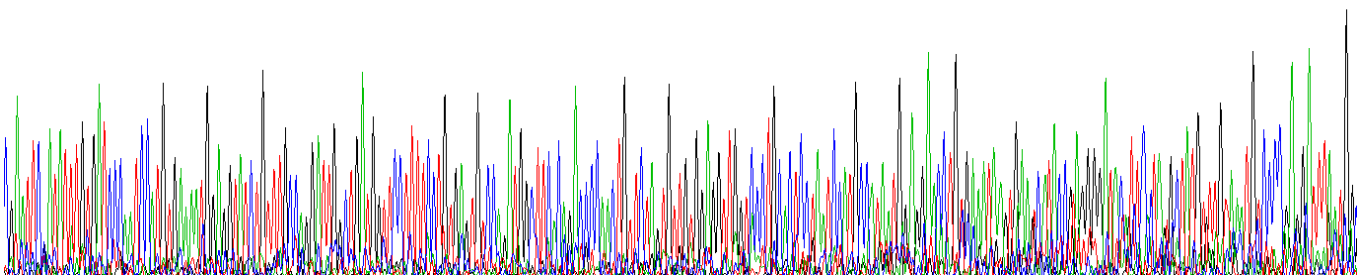


Figure . Gene Sequencing (extract)

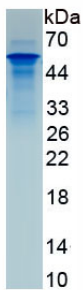


Figure. SDS-PAGE

[IMPORTANT NOTE]

The kit is designed for research use only, we will not be responsible for any issue if the kit was used in clinical diagnostic or any other procedures.