

RPB337Bo01 100µg

Recombinant Elastin (ELN)

Organism Species: *Bos taurus*; Bovine (Cattle)

Instruction manual

FOR RESEARCH USE ONLY

NOT FOR USE IN CLINICAL DIAGNOSTIC PROCEDURES

12th Edition (Revised in Aug, 2016)

[**PROPERTIES**]

Source: Prokaryotic expression

Host: *E.coli*

Residues: Gly27~Lys747

Tags: N-terminal His Tag

Subcellular Location: Secreted, Extracellular matrix

Purity: > 90%

Traits: Freeze-dried powder

Buffer formulation: 20mM Tris, 150mM NaCl, pH8.0, containing 0.01% SKL, 5% Trehalose.

Original Concentration: 200µg/mL

Applications: Positive Control; Immunogen; SDS-PAGE; WB.

(May be suitable for use in other assays to be determined by the end user.)

Predicted isoelectric point: 11.0

Predicted Molecular Mass: 64.7kDa

Accurate Molecular Mass: 65kDa as determined by SDS-PAGE reducing conditions.

[**USAGE**]

Reconstitute in 20mM Tris, 150mM NaCl (pH8.0) to a concentration of 0.1-1.0 mg/mL. Do not vortex.

[**STORAGE AND STABILITY**]

Storage: Avoid repeated freeze/thaw cycles.

Store at 2-8°C for one month.

Aliquot and store at -80°C for 12 months.

Stability Test: The thermal stability is described by the loss rate. The loss rate was determined by accelerated thermal degradation test, that is, incubate the protein at 37°C for 48h, and no obvious degradation and precipitation were observed. The loss rate is less than 5% within the expiration date under appropriate storage condition.

[**SEQUENCE**]

```

GGVP GAVPGGVPPG VFFPGAGLGG
LGVGGLPGV KPAKPGVGGV VGPGLGAEVS ALPGAFFPGF FGAGGGAAGA
AAAYKAAKA GAAGLVGGI GVGGLGVST GAVVPQLGAG VGAGVKPGKV
PGVGLPGVYP GVLPLGAGAR FPGIGVLPV PTGAGVKPKA QVGAGAFAGI
PGVPGFQQQ PGLPLGYPIK APKLPAGYGL PYKTGKLPYG FPGGGVAGSA
GKAGYPTGTG VGPQAAAAA KAAAKLGAGG AGVLPVGVG GPGIPGAPGA
IPGIGGIAGV GAPDAAAAA AAKAAKFGA AGGLPGVGV GVGVPVGVGVP
GVGVPVGVGVP GVGVPVGVGVP GVGVPVGVGVP GVGVPVGVGVP GALSPAATAK
AAAKAAKFGA RGAVGIGGIP TFGLPGGFP GIGDAAAAPA AAAAKAAKIG
AGVGALGGV VPGAPGAIPG LPGVGGVPGV GIPAAAAKA AAKAAQFLG
PGVGVAPGV VPGVGVVPG VGVAPGIGL PGGVIGAGV AAKSAAKAA
AKAQFRAAG LPAGVPGLV GAGVPGLGV AGVPGLGVA GVPVPGAVPG
TLAAAKAAKF GPGVGVGALGG VDLGGAGIP GGVAGVVPAA AAAAKAAKA
AQFGLGGVGG LGVGGLGAVP GAVGLGGVSP AAAAKAAKFG AAGLGGVLGA
GQPFPIGGGA GGLGVGGKPP KPFGGALGAL GFPGGACLK SCGRKRK

```

[IDENTIFICATION]

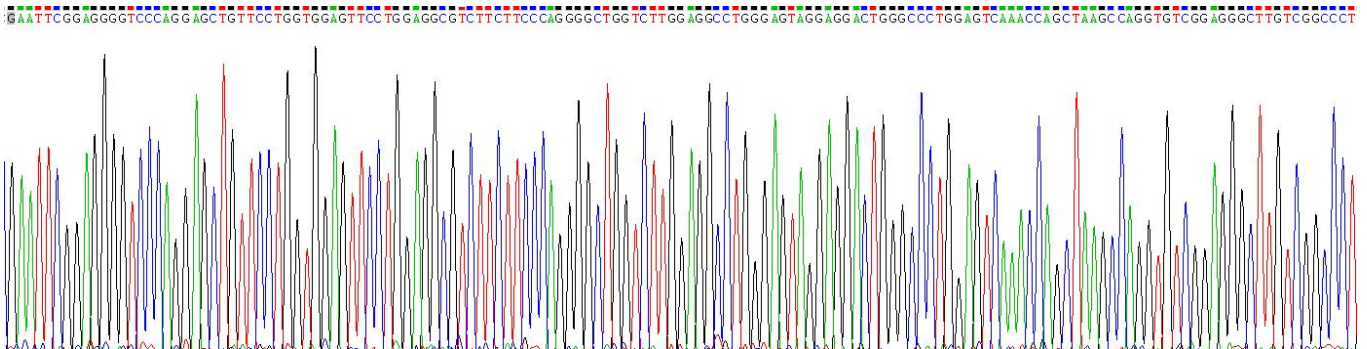


Figure . Gene Sequencing (extract)

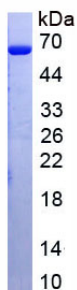


Figure. SDS-PAGE

[IMPORTANT NOTE]

The kit is designed for research use only, we will not be responsible for any issue if the kit was used in clinical diagnostic or any other procedures.