

**RPL504Hu01 20µg**

**Recombinant Endoplasmic Reticulum Lipid Raft Associated Protein 2 (ERLIN2)**

**Organism Species: *Homo sapiens (Human)***

***Instruction manual***

FOR RESEARCH USE ONLY

NOT FOR USE IN CLINICAL DIAGNOSTIC PROCEDURES

---

12th Edition (Revised in Aug, 2016)

## [ **PROPERTIES** ]

**Source:** Prokaryotic expression

**Host:** *E.coli*

**Residues:** Pro47~Asn339

**Tags:** N-terminal His Tag

**Subcellular Location:** Endoplasmic reticulum lumen

**Purity:** > 90%

**Traits:** Freeze-dried powder

**Buffer formulation:** 100mMNaHCO<sub>3</sub>, 500mMNaCl, pH8.3, containing 0.01% SKL, 5% Trehalose.

**Original Concentration:** 200µg/mL

**Applications:** Positive Control; Immunogen; SDS-PAGE; WB.

(May be suitable for use in other assays to be determined by the end user.)

**Predicted isoelectric point:** 5.3

**Predicted Molecular Mass:** 36.9kDa

**Accurate Molecular Mass:** 37kDa as determined by SDS-PAGE reducing conditions.

## [ **USAGE** ]

Reconstitute in 100mM NaHCO<sub>3</sub>, 500mM NaCl (pH8.3) to a concentration of 0.1-1.0 mg/mL. Do not vortex.

## [ **STORAGE AND STABILITY** ]

**Storage:** Avoid repeated freeze/thaw cycles.

Store at 2-8°C for one month.

Aliquot and store at -80°C for 12 months.

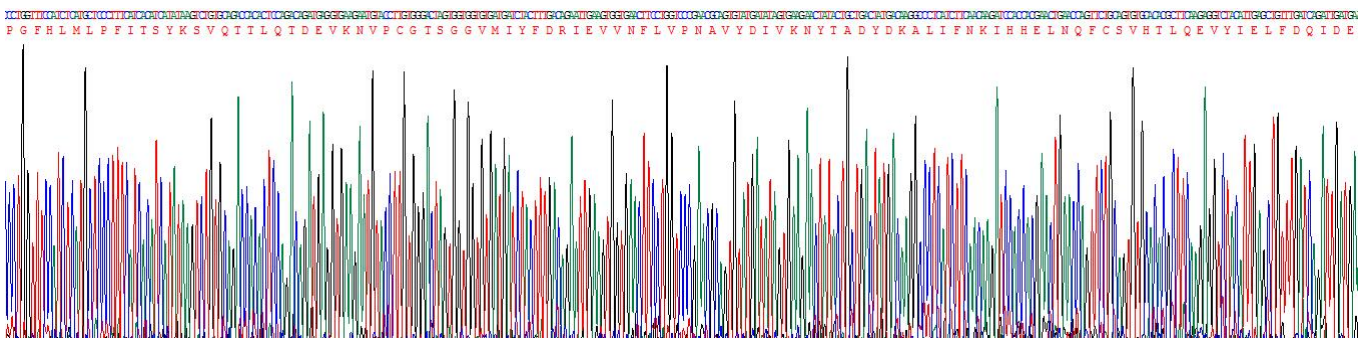
**Stability Test:** The thermal stability is described by the loss rate. The loss rate was determined by accelerated thermal degradation test, that is, incubate the protein at 37°C for 48h, and no obvious degradation and precipitation were observed. The loss rate is less than 5% within the expiration date under appropriate storage condition.

**[ SEQUENCE ]**

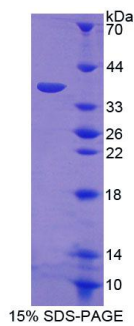
PGFH

LMLPFITSYK SVQTTLQTDE VKNVPCGTSG GVMIFYDRIE VVNFLVNAV  
 YDIVKNYTAD YDKALIFNKI HHELNQFCSV HTLQEVYIEL FDQIDENLKL  
 ALQQDLTSM PGLVIQAVRV TKPNIPEAIR RNYELMESEK TKLLIAAQKQ  
 KVVEKEAETE RKKALIEAEK VAQVAEITYG QKVMKETEK KISEIEDAAF  
 LAREKAKADA ECYTAMKIAE ANKLLTPEY LQLMKYKAIA SNSKIYFGKD  
 IPNMFMSAG SVSKQFEGLA DKLSFGLEDE PLETATKEN

**[ IDENTIFICATION ]**



**Figure. Gene Sequencing (Extract)**



**[ IMPORTANT NOTE ]**

The kit is designed for research use only, we will not be responsible for any issue if the kit was used in clinical diagnostic or any other procedures.