

RPB981Hu01 100ug
Recombinant Endothelin Receptor A (ETRA)
Organism Species: *Homo sapiens (Human)*
Instruction manual

FOR RESEARCH USE ONLY
NOT FOR USE IN CLINICAL DIAGNOSTIC PROCEDURES

12th Edition (Revised in Aug, 2016)

[PROPERTIES]

Source: Prokaryotic expression

Host: *E.coli*

Residues: Asp21~Lys80

Tags: N-terminal His Tag

Subcellular Location: Membrane

Purity: > 90%

Traits: Freeze-dried powder

Buffer formulation: 20mM Tris, 150mM NaCl, pH8.0, containing 0.01% skl, 5%Trehalose.

Original Concentration: 200µg/mL

Applications: Positive Control; Immunogen; SDS-PAGE; WB.

(May be suitable for use in other assays to be determined by the end user.)

Predicted isoelectric point: 6.8

Predicted Molecular Mass: 10.5kDa

Accurate Molecular Mass: 12kDa as determined by SDS-PAGE reducing conditions.

[USAGE]

Reconstitute in 20mM Tris, 150mM NaCl (pH8.0) to a concentration of 0.1-1.0 mg/mL. Do not vortex.

[STORAGE AND STABILITY]

Storage: Avoid repeated freeze/thaw cycles.

Store at 2-8°C for one month.

Aliquot and store at -80°C for 12 months.

Stability Test: The thermal stability is described by the loss rate. The loss rate was determined by accelerated thermal degradation test, that is, incubate the protein at 37°C for 48h, and no obvious degradation and precipitation were observed. The loss rate is less than 5% within the expiration date under appropriate storage condition.

[SEQUENCE]

DNPERYSTNL SNHVDDFTTF RGTLSFLVT
THQPTNLVLP SNGSMHNYCP QQTKITSAFK

[IDENTIFICATION]

CGATATCCCTGAGAGTACAGCACAAATCTAAGCAATCATGTGGATGATTTTACCCACTTTTCGGGACAGAGCTCAGCTTCTGGTTACCACTCATCAACCCACTAATTTGGTCTACCCAGCATGGCTCAATGCACACTATTGCCACAGCAGACTAAATTAATTCTCAGCTTTGAA
D N P E R Y S T N L S N H V D D F T T F R G T E L S F L V T T H Q P T N L V L P S N G S M H N Y C P Q Q T K I T S A F K

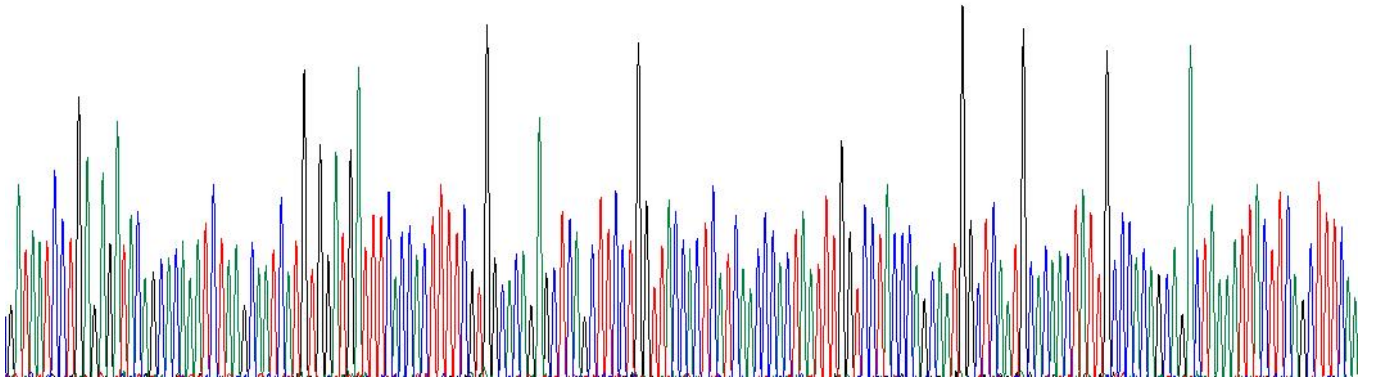


Figure. Gene Sequencing (Extract)

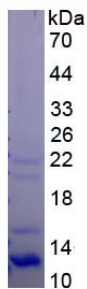


Figure. SDS-PAGE

[IMPORTANT NOTE]

The kit is designed for research use only, we will not be responsible for any issue if the kit was used in clinical diagnostic or any other procedures.