

RPB433Rb01 100µg

Recombinant Enolase 3 (ENO3)

Organism Species: *Oryctolagus cuniculus* (Rabbit)

Instruction manual

FOR RESEARCH USE ONLY

NOT FOR USE IN CLINICAL DIAGNOSTIC PROCEDURES

12th Edition (Revised in Aug, 2016)

[**PROPERTIES**]

Source: Prokaryotic expression

Host: *E.coli*

Residues: Met3~Lys434

Tags: N-terminal His Tag

Subcellular Location: Chromosome

Purity: > 97%

Traits: Freeze-dried powder

Buffer formulation: 20mM Tris, 150mM NaCl, pH8.0, containing 1mM EDTA, 1mM DTT, 0.01% SKL, 5% Trehalose and Proclin300.

Original Concentration: 200µg/mL

Applications: Positive Control; Immunogen; SDS-PAGE; WB.

(May be suitable for use in other assays to be determined by the end user.)

Predicted isoelectric point: 7.3

Predicted Molecular Mass: 48.6kDa

Accurate Molecular Mass: 45kDa as determined by SDS-PAGE reducing conditions.

[**USAGE**]

Reconstitute in 20mM Tris, 150mM NaCl (pH8.0) to a concentration of 0.1-1.0 mg/mL. Do not vortex.

[**STORAGE AND STABILITY**]

Storage: Avoid repeated freeze/thaw cycles.

Store at 2-8°C for one month.

Aliquot and store at -80°C for 12 months.

Stability Test: The thermal stability is described by the loss rate. The loss rate was determined by accelerated thermal degradation test, that is, incubate the protein at 37°C for 48h, and no obvious degradation and precipitation were observed. The loss rate is less than 5% within the expiration date under appropriate storage condition.

[SEQUENCE]

```

MQKIFARE  ILDSRGNPTV  EVDLHTAKGR  FRAAVPSGAS  TGIYEALELR
DGDKSRYL GK  GVLKAVEHIN  KTLGPALLEK  KLSVVDQEKV  DKFMIELDGT
ENKSKFGANA  ILGVSLAVCK  AGAAEKGVPL  YRHIADLAGN  HDLVLPVPAF
NVIINGGSHAG  NKLAMQEFMI  LPVGASSFRE  AMRIGAEVYH  HLKGVIKAKY
GKDATNVGDE  GGFAPNILEN  NEALELLKTA  IQAAGYPDKV  VIGMDVAASE
FHRNGKYDLD  FKSPDDPARH  ITGQKLGELY  KSFIGNYPVV  SIEDPFDQDD
WATWTSFLSG  VDIQIVGDDL  TVTNPKRIAQ  AVEKKACNCL  LLKVNQIGSV
TESIQACKLA  QSNGWGMVVS  HRSGETEDTF  IADLVVGLCT  GQIKTGAPCR
SERLAKYNQL  MRIEEALGDK  AVFAGRKFRN  PKAK
    
```

[IDENTIFICATION]

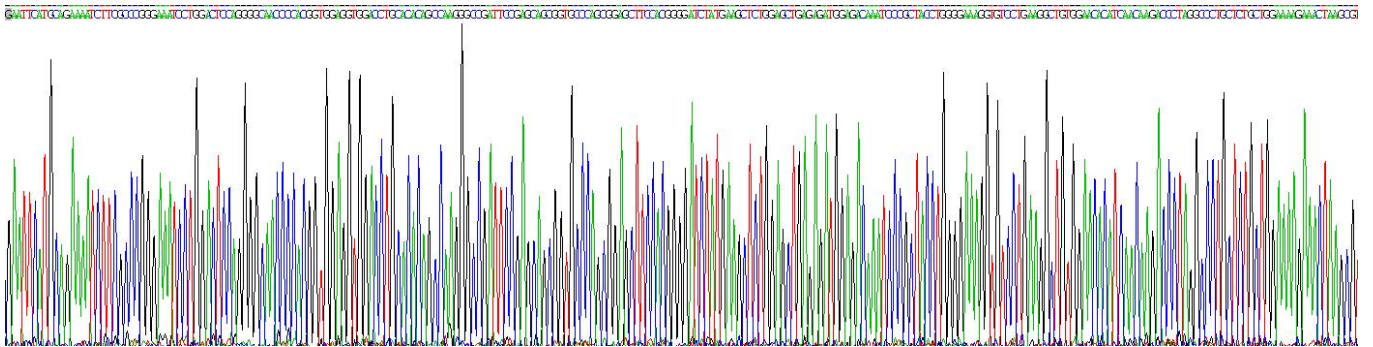
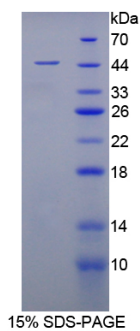


Figure . Gene Sequencing (extract)



[IMPORTANT NOTE]

The kit is designed for research use only, we will not be responsible for any issue if the kit was used in clinical diagnostic or any other procedures.