

RPE112Mu01 100µg

Recombinant Ephrin B2 (EFNB2)

Organism Species: *Mus musculus* (Mouse)

Instruction manual

FOR RESEARCH USE ONLY

NOT FOR USE IN CLINICAL DIAGNOSTIC PROCEDURES

13th Edition (Revised in Aug, 2023)

[PROPERTIES]

Source: Prokaryotic expression

Host: *E.coli*

Residues: Phe45~Val336

Tags: N-terminal His Tag

Subcellular Location: Membrane

Purity: > 97%

Traits: Freeze-dried powder

Buffer formulation: 20mM Tris, 150mM NaCl, pH8.0, containing 1mM EDTA, 1mM DTT, 0.01% SKL, 5% Trehalose and Proclin300.

Original Concentration: 200µg/mL

Applications: Positive Control; Immunogen; SDS-PAGE; WB.

(May be suitable for use in other assays to be determined by the end user.)

Predicted isoelectric point: 8.7

Predicted Molecular Mass: 35.8kDa

Accurate Molecular Mass: 38kDa as determined by SDS-PAGE reducing conditions.

[USAGE]

Reconstitute in 20mM Tris, 150mM NaCl (pH8.0) to a concentration of 0.1-1.0 mg/mL. Do not vortex.

[STORAGE AND STABILITY]

Storage: Avoid repeated freeze/thaw cycles.

Store at 2-8°C for one month.

Aliquot and store at -80°C for 12 months.

Stability Test: The thermal stability is described by the loss rate. The loss rate was determined by accelerated thermal degradation test, that is, incubate the protein at 37°C for 48h, and no obvious degradation and precipitation were observed. The loss rate is less than 5% within the expiration date under appropriate storage condition.

[SEQUENCE]

FLPGQG
LVLYPQIGDK LDIICPKVDS KTVGQYEYYK VYMVDKDQAD RCTIKKENTP
LLNCARPDQD VKFTIKFQEF SPNLWGLEFQ KNKDYYIIST SNGSLEGLDN
QEGGVCQTRA MKILMKVGQD ASSAGSARNH GPTRRPELEA GTNGRSSTTS
PFVKPNPGSS TDGNSAGHSG NLLGSEVAL FAGIASGCII FIVIIITLVV
LLLKYRRRHR KHSPQHTTTL SLSTLATPKR GGNNNGSEPS DVI IPLRTAD
SVFCPHYEKV SGDYGHPVYI VQEMPPQSPA NIYYKV

[IDENTIFICATION]

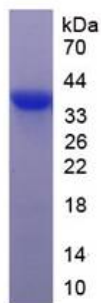


Figure. SDS-PAGE

[IMPORTANT NOTE]

The kit is designed for research use only, we will not be responsible for any issue if the kit was used in clinical diagnostic or any other procedures.