

RPA027Hu03 100µg
Recombinant Erythropoietin Receptor (EPOR)
Organism Species: *Homo sapiens (Human)*
Instruction manual

FOR RESEARCH USE ONLY
NOT FOR USE IN CLINICAL DIAGNOSTIC PROCEDURES

12th Edition (Revised in Aug, 2016)

[PROPERTIES]

Source: Prokaryotic expression

Host: *E.coli*

Residues: Pro33~Leu210

Tags: N-terminal His Tag

Subcellular Location: Membrane, Secreted

Purity: > 90%

Traits: Freeze-dried powder

Buffer formulation: 20mM Tris, 150mM NaCl, pH8.0, containing 0.01% SKL, 5% Trehalose.

Original Concentration: 200µg/mL

Applications: Positive Control; Immunogen; SDS-PAGE; WB.

(May be suitable for use in other assays to be determined by the end user.)

Predicted isoelectric point: 5.0

Predicted Molecular Mass: 23.2kDa

Accurate Molecular Mass: 24kDa as determined by SDS-PAGE reducing conditions.

[USAGE]

Reconstitute in 20mM Tris, 150mM NaCl (pH8.0) to a concentration of 0.1-1.0 mg/mL. Do not vortex.

[STORAGE AND STABILITY]

Storage: Avoid repeated freeze/thaw cycles.

Store at 2-8°C for one month.

Aliquot and store at -80°C for 12 months.

Stability Test: The thermal stability is described by the loss rate. The loss rate was determined by accelerated thermal degradation test, that is, incubate the protein at 37°C for 48h, and no obvious degradation and precipitation were observed. The loss rate is less than 5% within the expiration date under appropriate storage condition.

[SEQUENCE]

PKFESKAA LLAARGPEEL
 LCFTERLEDL VCFWEEAASA GVGPGNYSFS YQLEDEPWKL CRLHQAPTAR
 GAVRFWCSLP TADTSSFVPL ELRVTAASGA PRYHRVIHIN EVVLLDAPVG
 LVARLADESG HVVLRWLPPP ETPMTSHIRY EVDVSAGNGA GSVQRVEILE
 GRTECVLSNL

[IDENTIFICATION]

G A A T T C C C C A A G T T C G A G A G C A A A G C G G C C T T G C T G G C G G C C C G G G G C C C G A A G A G C T T C T G T G C T T C A C C G A G C G G T T G A G G A C T T G G T G T G T T T C T G G G A G G A A G C G G C G A G C G C T G G G T G G C C C G G G C A A C T A C A G C

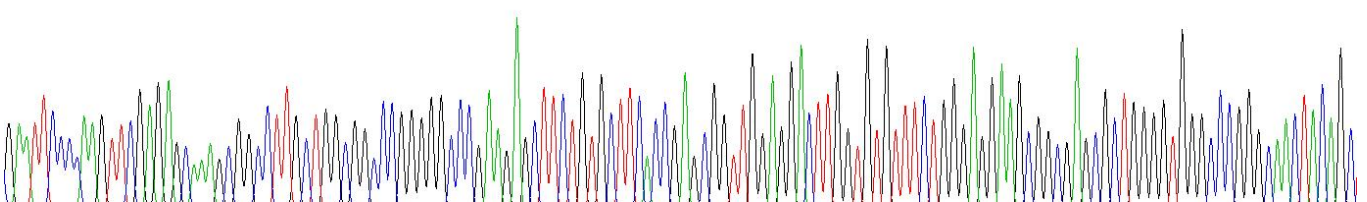


Figure . Gene Sequencing (extract)

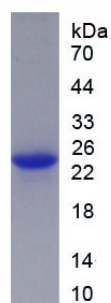


Figure. SDS-PAGE

[IMPORTANT NOTE]

The kit is designed for research use only, we will not be responsible for any issue if the kit was used in clinical diagnostic or any other procedures.