

RPB050Mu01 10 μ g
Recombinant Estrogen Receptor Alpha (ER α)
Organism Species: *Mus musculus* (Mouse)
Instruction manual

FOR RESEARCH USE ONLY
NOT FOR USE IN CLINICAL DIAGNOSTIC PROCEDURES

13th Edition (Revised in Aug, 2023)

[**PROPERTIES**]

Source: Prokaryotic expression

Host: *E.coli*

Residues: Ile233~Leu483

Tags: N-terminal His and GST Tag

Subcellular Location: Membrane, Nucleus, Cytoplasm, Golgi apparatus

Purity: > 95%

Traits: Freeze-dried powder

Buffer formulation: 20mM Tris, 150mM NaCl, pH8.0, containing 1mM EDTA, 1mM DTT, 0.01% SKL, 5% Trehalose and Proclin300.

Original Concentration: 200µg/mL

Applications: Positive Control; Immunogen; SDS-PAGE; WB.

(May be suitable for use in other assays to be determined by the end user.)

Predicted isoelectric point: 9.0

Predicted Molecular Mass: 58.6KDa

Accurate Molecular Mass: 59kDa as determined by SDS-PAGE reducing conditions.

[**USAGE**]

Reconstitute in 20mM Tris, 150mM NaCl (pH8.0) to a concentration of 0.1-1.0 mg/mL. Do not vortex.

[**STORAGE AND STABILITY**]

Storage: Avoid repeated freeze/thaw cycles.

Store at 2-8°C for one month.

Aliquot and store at -80°C for 12 months.

Stability Test: The thermal stability is described by the loss rate. The loss rate was determined by accelerated thermal degradation test, that is, incubate the protein at 37°C for 48h, and no obvious degradation and precipitation were observed. The loss rate is less than 5% within the expiration date under appropriate storage condition.

[SEQUENCE]

			IDKNRRKS	CQACRLRKCY
EVGMMKGGIR	KDRRGGRMLK	HKRQRDDLEG	RNEMGASGDM	RAANLWPSPL
VIKHTKKNSP	ALSLTADQMV	SALLDAEPPM	IYSEYDPSRP	FSEASMMGLL
TNLADREL VH	MINWAKRVPG	FGDLNLHDQV	HLLECAWLEI	LMIGLVWRSM
EHPGKLLFAP	NLLLDNRNQGK	CVEGMVEIFD	MLLATSSRFR	MMNLQGEEFV
CLKSIILLNS	GVYTFLSSTL	KSLEEKDHIH	RVL	

[IDENTIFICATION]

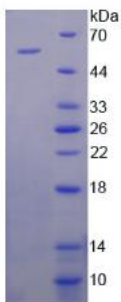


Figure. SDS-PAGE

[IMPORTANT NOTE]

The kit is designed for research use only, we will not be responsible for any issue if the kit was used in clinical diagnostic or any other procedures.