

RPE975Hu01 50µg

Recombinant Eukaryotic Translation Initiation Factor 2 Alpha Kinase 3 (EIF2aK3)

Organism Species: *Homo sapiens (Human)*

Instruction manual

FOR IN VITRO USE AND RESEARCH USE ONLY
NOT FOR USE IN CLINICAL DIAGNOSTIC PROCEDURES

12th Edition (Revised in Aug, 2016)

[PROPERTIES]

Source: Prokaryotic expression

Host: *E.coli*

Residues: Phe593~Phe1077

Tags: N-terminal His Tag

Subcellular Location: Membrane

Purity: > 95%

Traits: Freeze-dried powder

Buffer formulation: 20mM Tris, 150mM NaCl, pH8.0, containing 1mM EDTA, 1mM DTT, 0.01% SKL, 5% Trehalose and Proclin300.

Original Concentration: 200µg/mL

Applications: Positive Control; Immunogen; SDS-PAGE; WB.

(May be suitable for use in other assays to be determined by the end user.)

Predicted isoelectric point: 5.2

Predicted Molecular Mass: 58.7kDa

Accurate Molecular Mass: 59kDa as determined by SDS-PAGE reducing conditions.

[USAGE]

Reconstitute in 20mM Tris, 150mM NaCl (pH8.0) to a concentration of 0.1-1.0 mg/mL. Do not vortex.

[STORAGE AND STABILITY]

Storage: Avoid repeated freeze/thaw cycles.

Store at 2-8°C for one month.

Aliquot and store at -80°C for 12 months.

Stability Test: The thermal stability is described by the loss rate. The loss rate was determined by accelerated thermal degradation test, that is, incubate the protein at 37°C for 48h, and no obvious degradation and precipitation were observed. The loss rate is less than 5% within the expiration date under appropriate storage condition.

[SEQUENCE]

```

                                FEPIQCLG
RGGFGVVFEA  KNKVDDCNYA  IKRIRLPNRE  LAREKVMREV  KALAKLEHPG
IVRYFNAWLE  APPEKWQEKM  DEIWLKDEST  DWPLSSPSPM  DAPSVKIRRM
DPFATKEHIE  IIAPSPQRSR  SFSVGISCDQ  TSSSESQFSP  LEFSGMDHED
ISESVDAAYN  LQDSCLTDCD  VEDGTMDGND  EGHSFELCPS  EASPYVRSRE
RTSSSIVFED  SGC DNASSKE  EPKTNRLHIG  NHCANKLTAF  KPTSSKSSSE
ATLSISPPRP  TTLSLDLTKN  TTEKLQPSSP  KVYLYIQMQL  CRKENLKDWM
NGRCTIEERE  RSVCLHIFLQ  IAEAVEFLHS  KGLMHRDLKP  SNIFFTMDDV
VKVGFGLVT  AMDQDEEEQT  VLT PMPAYAR  HTGQVGTKLY  MSPEQIHGNS
YSHKVDIFSL  GLILFELLYP  FSTQMERVRT  LTDVRNLKFP  PLFTQKYPCE
YVMVQDMLSP  SPMERPEAIN  I IENAVF
    
```

[IDENTIFICATION]

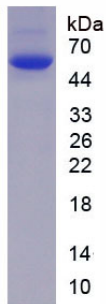


Figure. SDS-PAGE

[IMPORTANT NOTE]

The kit is designed for in vitro and research use only, we will not be responsible for any issue if the kit was used in clinical diagnostic or any other procedures.