

**RPC450Hu01 10µg**

**Recombinant Extracellular Matrix Protein 1 (ECM1)**

**Organism Species: *Homo sapiens (Human)***

***Instruction manual***

FOR RESEARCH USE ONLY

NOT FOR USE IN CLINICAL DIAGNOSTIC PROCEDURES

---

13th Edition (Revised in Aug, 2023)

## [ **PROPERTIES** ]

**Source:** Prokaryotic expression

**Host:** *E.coli*

**Residues:** Ala20~Glu540

**Tags:** N-terminal His Tag

**Subcellular Location:** Secreted, Extracellular matrix

**Purity:** > 95%

**Traits:** Freeze-dried powder

**Buffer formulation:** 20mM Tris, 150mM NaCl, pH8.0, containing 1mM DTT, 0.01% SKL, 5% Trehalose .

**Original Concentration:** 200µg/mL

**Applications:** Positive Control; Immunogen; SDS-PAGE; WB.

(May be suitable for use in other assays to be determined by the end user.)

**Predicted isoelectric point:** 6.2

**Predicted Molecular Mass:** 62.5kDa

**Accurate Molecular Mass:** 70kDa as determined by SDS-PAGE reducing conditions.

### **Phenomenon explanation:**

The possible reasons that the actual band size differs from the predicted are as follows:

1. Splice variants: Alternative splicing may create different sized proteins from the same gene.
2. Relative charge: The composition of amino acids may affects the charge of the protein.
3. Post-translational modification: Phosphorylation, glycosylation, methylation etc.
4. Post-translation cleavage: Many proteins are synthesized as pro-proteins, and then cleaved to give the active form.
5. Polymerization of the target protein: Dimerization, multimerization etc.

## [ **USAGE** ]

Reconstitute in 20mM Tris, 150mM NaCl (pH8.0) to a concentration of 0.1-1.0 mg/mL. Do not vortex.

**[ STORAGE AND STABILITY ]**

**Storage:** Avoid repeated freeze/thaw cycles.

Store at 2-8°C for one month.

Aliquot and store at -80°C for 12 months.

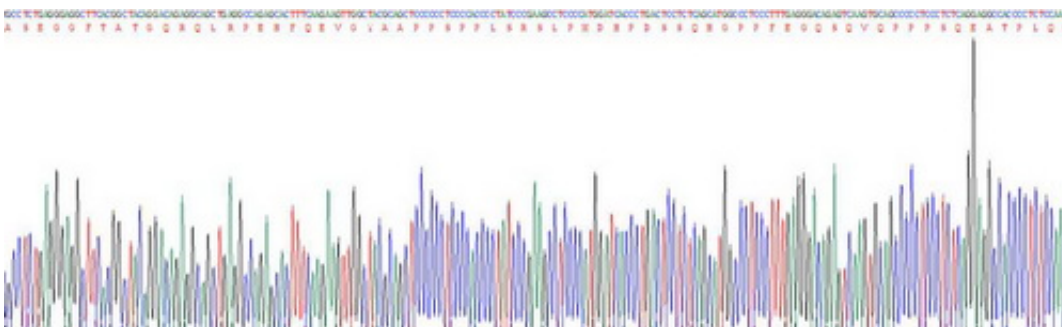
**Stability Test:** The thermal stability is described by the loss rate. The loss rate was determined by accelerated thermal degradation test, that is, incubate the protein at 37°C for 48h, and no obvious degradation and precipitation were observed. The loss rate is less than 5% within the expiration date under appropriate storage condition.

**[ SEQUENCE ]**

```

                A SEGGFTATGQ RQLRPEHFQE VGYAAPPSP
LSRSLPMDHP DSSQHGPPFE GQSQVQPPPS QEATPLQEK LLPAQLPAEK
EVGPPLPQEA VPLQKELPSL QHPNEQKEGT PAPFGDQSH EPESWNAAQH
CQQDRSQGGW GHRLDGFPPG RSPDNLNQI CLPNRQHVVY GPWNLQSSY
SHLTRQGETL NFLEIGYSRC CHCRSHTNRL ECAKLVWEEA MSRFCEAEFS
VKTRPHWCCT RQGEARFSCF QEEAPQPHYQ LRACPSHQPD ISSGLELPPF
PGVPTLDNIK NICHLRFRS VPRNLPATDP LQRELLALIQ LEREFQRCCR
QGNHTCTWK AWEDTLDKYC DREYAVKTHH HLCCRHPPSP TRDECFARRA
PYPNYDRDIL TIDIGRVTPN LMGHLCGNQR VLTKHKHIPG LIHNMTARCC
DLPFPEQACC AEEEKLTFIN DLGPRRNW RDPALCCYLS PGDEQVNCFN
INYLRNVALV SGDTEAKGQ GEQGSTGGTN ISSTSEPKKE
    
```

**[ IDENTIFICATION ]**



**Figure . Gene Sequencing (extract)**

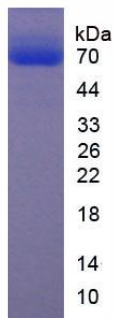


Figure. SDS-PAGE

**[ IMPORTANT NOTE ]**

The kit is designed for research use only, we will not be responsible for any issue if the kit was used in clinical diagnostic or any other procedures.