

RPA930Ra01 100µg

Recombinant Extracellular Signal Regulated Kinase 2 (ERK2)

Organism Species: *Rattus norvegicus* (Rat)

Instruction manual

FOR RESEARCH USE ONLY

NOT FOR USE IN CLINICAL DIAGNOSTIC PROCEDURES

12th Edition (Revised in Aug, 2016)

[PROPERTIES]

Source: Prokaryotic expression

Host: *E.coli*

Residues: Tyr23~Ser358

Tags: N-terminal His Tag

Subcellular Location: Membrane, Nucleus, Cytoplasm

Purity: > 90%

Traits: Freeze-dried powder

Buffer formulation: 20mM Tris, 150mM NaCl, pH8.0, containing 0.01% SKL, 5% Trehalose.

Original Concentration: 200µg/mL

Applications: Positive Control; Immunogen; SDS-PAGE; WB.

(May be suitable for use in other assays to be determined by the end user.)

Predicted isoelectric point: 7.0

Predicted Molecular Mass: 42.8kDa

Accurate Molecular Mass: 43kDa as determined by SDS-PAGE reducing conditions.

[USAGE]

Reconstitute in 20mM Tris, 150mM NaCl (pH8.0) to a concentration of 0.1-1.0 mg/mL. Do not vortex.

[STORAGE AND STABILITY]

Storage: Avoid repeated freeze/thaw cycles.

Store at 2-8°C for one month.

Aliquot and store at -80°C for 12 months.

Stability Test: The thermal stability is described by the loss rate. The loss rate was determined by accelerated thermal degradation test, that is, incubate the protein at 37°C for 48h, and no obvious degradation and precipitation were observed. The loss rate is less than 5% within the expiration date under appropriate storage condition.

[SEQUENCE]

YTNLSYIG EGAYGMVCSA YDNLNKVRVA
 IKKISPFHQ TYCQRTLREI KILLRFRHEN IIGINDIIRA PTIEQMKDVY
 IVQDLMETDL YKLLKTQHLS NDHICYFLYQ ILRGLKYIHS ANVLHRDLKP
 SNLLLNTTCD LKICDFGLAR VADPDHDHTG FLTEYVATRW YRAPEIMLNS
 KGYTKSIDIW SVGCILAEML SNRPIFPKGH YLDQLNHILG ILGSPSQEDL
 NCIINLKARN YLLSLPHKNK VPWNRLFPNA DSKALDLLDK MLTFNPHKRI
 EVEQALAHPY LEQYYDPSDE PIAEAPFKFD MELDDLPEK LKELIFEETA
 RFQPGYRS

[IDENTIFICATION]

CGAGCTTGCTACACCGAOCCTCTGTAATGGGGAGGGGGGCTTAGGGCAATGGTGTCTCTGCTTATGATATGTGTCAACAAAGTTCGGTAGCTATCAAGAAATCAGGCCCTTTGAGCACAGACCTACTGGCAGAGACCCCTGAGGGGATAAAAATCTTACTGGCCTTCAAGCATGAGMCATCATTTGGAATCAATGACATTATTTC

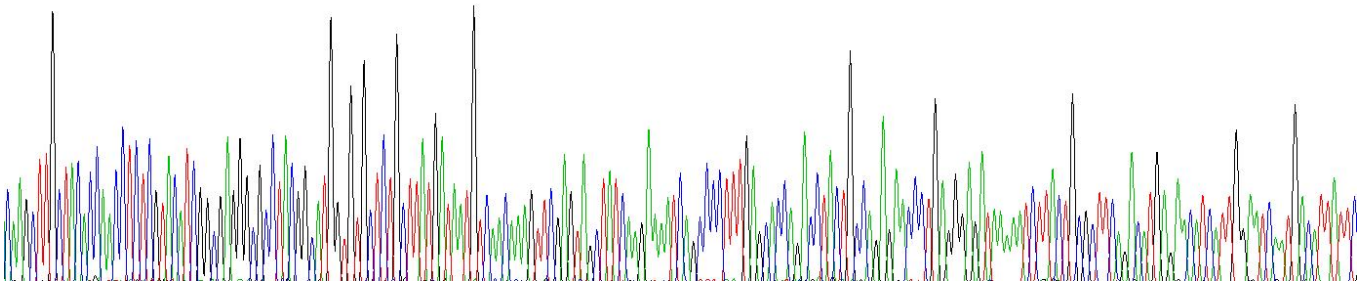


Figure . Gene Sequencing (extract)

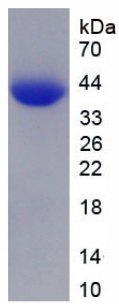


Figure. SDS-PAGE

[IMPORTANT NOTE]

The kit is designed for research use only, we will not be responsible for any issue if the kit was used in clinical diagnostic or any other procedures.