

RPL523Mu01 100ug

Recombinant FK506 Binding Protein Like Protein (FKBPL)

Organism Species: *Mus musculus* (Mouse)

Instruction manual

FOR RESEARCH USE ONLY

NOT FOR USE IN CLINICAL DIAGNOSTIC PROCEDURES

13th Edition (Revised in Aug, 2023)

[PROPERTIES]

Source: Prokaryotic expression

Host: *E.coli*

Residues: Met1~Ser347

Tags: N-terminal His and GST Tag

Subcellular Location: Endoplasmic reticulum lumen

Purity: > 97%

Traits: Freeze-dried powder

Buffer formulation: PBS, pH7.4, containing 0.01% SKL, 5% Trehalose.

Original Concentration: 200µg/mL

Applications: Positive Control; Immunogen; SDS-PAGE; WB.

(May be suitable for use in other assays to be determined by the end user.)

Predicted isoelectric point: 7.6

Predicted Molecular Mass: 68.3kDa

Accurate Molecular Mass: 68kDa as determined by SDS-PAGE reducing conditions.

[USAGE]

Reconstitute in 10mM PBS (pH7.4) to a concentration of 0.1-1.0 mg/mL. Do not vortex.

[STORAGE AND STABILITY]

Storage: Avoid repeated freeze/thaw cycles.

Store at 2-8°C for one month.

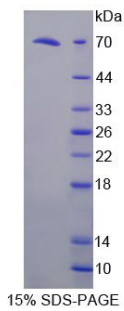
Aliquot and store at -80°C for 12 months.

Stability Test: The thermal stability is described by the loss rate. The loss rate was determined by accelerated thermal degradation test, that is, incubate the protein at 37°C for 48h, and no obvious degradation and precipitation were observed. The loss rate is less than 5% within the expiration date under appropriate storage condition.

[SEQUENCE]

METSPISPMN EKNTAQPQQR EENAQQILNT AIPFRQRSFG LLPEALKVGV
RPDPANQIVE TQEIEHPVAG FEGDSDQFQV STNEMAEHLQ ASDLWYCPDG
SFVKKIIVPG HGLDKPKLGS KCQVLALGFP FGSGMPEGWT ELTIGIGQWR
EKMWGELMEK CLESMRQGEE AKIHLPGSSA PLAKLR LDSF TNGRDSWEME
AMEKEALAKE EHRRGTE LFR AGNPQGAARC YGRALRLLLT LPPPGPPERT
TLYANLAACQ LLLGHPQLAA QSCDRVLERE PGHLKALYRR GVARAALGDL
EKATADFKKV LAVDPKNRAA KEELGKVVIQ GRKQDAGLAR GLRKMFS

[IDENTIFICATION]



[IMPORTANT NOTE]

The kit is designed for research use only, we will not be responsible for any issue if the kit was used in clinical diagnostic or any other procedures.