

**RPK247Hu01 50µg**

**Recombinant FYN Oncogene Related To SRC/FGR/YES (FYN)**

**Organism Species: *Homo sapiens (Human)***

***Instruction manual***

FOR RESEARCH USE ONLY

NOT FOR USE IN CLINICAL DIAGNOSTIC PROCEDURES

---

12th Edition (Revised in Aug, 2016)

**[ PROPERTIES ]**

**Source:** Prokaryotic expression

**Host:** *E.coli*

**Residues:** Gly2~Leu537

**Tags:** N-terminal His Tag

**Subcellular Location:** Membrane, Nucleus, Cytoplasm

**Purity:** > 97%

**Traits:** Freeze-dried powder

**Buffer formulation:** 100mMNaHCO<sub>3</sub>, 500mMNaCl, pH8.3, containing 0.01% SKL, 5% Trehalose.

**Original Concentration:** 300µg/mL

**Applications:** Positive Control; Immunogen; SDS-PAGE; WB.

(May be suitable for use in other assays to be determined by the end user.)

**Predicted isoelectric point:** 6.2

**Predicted Molecular Mass:** 64.3kDa

**Accurate Molecular Mass:** 64kDa as determined by SDS-PAGE reducing conditions.

**[ USAGE ]**

Reconstitute in ddH<sub>2</sub>O to a concentration of 0.1-1.0 mg/mL. Do not vortex.

**[ STORAGE AND STABILITY ]**

**Storage:** Avoid repeated freeze/thaw cycles.

Store at 2-8°C for one month.

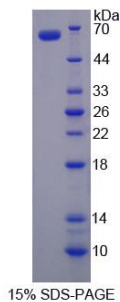
Aliquot and store at -80°C for 12 months.

**Stability Test:** The thermal stability is described by the loss rate. The loss rate was determined by accelerated thermal degradation test, that is, incubate the protein at 37°C for 48h, and no obvious degradation and precipitation were observed. The loss rate is less than 5% within the expiration date under appropriate storage condition.

**[ SEQUENCE ]**

GCVQCKDKE ATKLTEERDG SLNQSSGYRY GTDPTPQHYP SFGVTSIPNY  
NNFHAAGGQG LTVFGGVNSS SHTGTLRTRG GTGVTLFVAL YDYEARTEDD  
LSFHKGEKFQ ILNSSEGDWW EARSLLTGET GYIPSNYVAP VDSIQAEEWY  
FGKLGRKDAE RQLLSFGNPR GTFLIRESET TKGAYSLSIR DWDDMKGDHV  
KHYKIRKLDN GGYIITTRAQ FETLQQLVQH YSERAAGLCC RLVVPCHKGM  
PRLTDLVKKT KDVWEIPRES LQLIKRLGNG QFGEVWMTW NGNTKVAIKT  
LKPGTMSPES FLEEAQIMKK LKHDKLVQLY AVVSEEPYI VTEYMNKGSL  
LDFLKDGEGR ALKLPNLVDM AAQVAAGMAY IERMNYIHRD LRSANILVGN  
GLICKIADFG LARLIEDNEY TARQGAKFPI KWTAPEAALY GRFTIKSDVW  
SFGILLTELK TKGRVPYPMG NNREVLEQVE RGYRMPCPDQ CPISLHELMI  
HCWKKDPEER PTFEYLQSFL EDYFTATEPQ YQPGENL

**[ IDENTIFICATION ]**



**[ IMPORTANT NOTE ]**

The kit is designed for research use only, we will not be responsible for any issue if the kit was used in clinical diagnostic or any other procedures.