

**RPB154Bo01 200µg**  
**Recombinant Fibrinogen Alpha Chain (FGA)**  
**Organism Species: *Bos taurus*; Bovine (Cattle)**  
***Instruction manual***

FOR RESEARCH USE ONLY  
NOT FOR USE IN CLINICAL DIAGNOSTIC PROCEDURES

---

12th Edition (Revised in Aug, 2016)

**[ PROPERTIES ]**

**Source:** Prokaryotic expression

**Host:** *E.coli*

**Residues:** Gly39~Pro615

**Tags:** N-terminal His Tag

**Subcellular Location:** Secreted

**Purity:** > 90%

**Traits:** Freeze-dried powder

**Buffer formulation:** PBS, pH7.4, containing 0.01% SKL, 5% Trehalose.

**Original Concentration:** 120µg/mL

**Applications:** Positive Control; Immunogen; SDS-PAGE; WB.

(May be suitable for use in other assays to be determined by the end user.)

**Predicted isoelectric point:** 7.7

**Predicted Molecular Mass:** 66.8KDa

**Accurate Molecular Mass:** 67kDa as determined by SDS-PAGE reducing conditions.

**[ USAGE ]**

Reconstitute in 10mM PBS (pH7.4) to a concentration of 0.1-1.0 mg/mL. Do not vortex.

**[ STORAGE AND STABILITY ]**

**Storage:** Avoid repeated freeze/thaw cycles.

Store at 2-8°C for one month.

Aliquot and store at -80°C for 12 months.

**Stability Test:** The thermal stability is described by the loss rate. The loss rate was determined by accelerated thermal degradation test, that is, incubate the protein at 37°C for 48h, and no obvious degradation and precipitation were observed. The loss rate is less than 5% within the expiration date under appropriate storage condition.

**[ SEQUENCE ]**

GP RLVERQQSAC  
 KETGWPFCS D EDWNTKCPSG CRMKGLIDEV DQDFTSRINK LRDSLFFNYQK  
 NSKDSNTLTK NIVELMRGDF AKANNNDNTF KQISEDLSR IEILRRKVIE  
 QVQRIKVLQK NVRDQLVDMK RLEVDIDIKI RSCCKGSCSRA LEHKVDLEDY  
 KNQQKQLEQV IAINLLPSRD IQYLPLIKMS TITGPVPREF KSQLQEAPLE  
 WKALLEMQQT KMVLETFGGD GHARGDSVSQ GTGLAPGSPR KPGTSSIGNV  
 NPGSYGPGSS GTWNPGRPEP GSAGTWNPGR PEPGSAGTWN PGRPEPGSAG  
 TWNPGRPEPG SAGTWNPGRP EPGSAGTWNT GSSGSSSFRP DSSGHGNIRP  
 SSPDWGTFRE EGSVSSGTKQ EFHTGKLVTT KGDKELLIDN EKVTSGHTTT  
 TRRSCSKVIT KTVTNA DGR TTTKEVVKSE DGSDCGDADF DWHHTFPSRG  
 NLDDFFHRDK DDFFTSSHE FDGRTGLAPE FAALGESGSS SSKTSTHSKQ  
 FVSSSTTVNR GGS AIESKHF KMEDEAESLE DLGFKGAHGT QKGHTKARPA  
 RGIHTSPLGE PSLTP

**[ IDENTIFICATION ]**

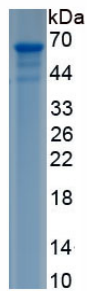


Figure. SDS-PAGE

**[ IMPORTANT NOTE ]**

The kit is designed for research use only, we will not be responsible for any issue if the kit was used in clinical diagnostic or any other procedures.