

**RPD022Bo01 100ug**

**Recombinant Fibrinogen Like Protein 1 (FGL1)**

**Organism Species: *Bos taurus*; Bovine (Cattle)**

***Instruction manual***

FOR RESEARCH USE ONLY

NOT FOR USE IN CLINICAL DIAGNOSTIC PROCEDURES

---

13th Edition (Revised in Aug, 2023)

**[ PROPERTIES ]**

**Source:** Prokaryotic expression

**Host:** *E.coli*

**Residues:** Leu23~Val312 (Accession # Q3SZZ7)

**Tags:** N-terminal His Tag

**Subcellular Location:** Secreted

**Purity:** > 90%

**Traits:** Freeze-dried powder

**Buffer formulation:** PBS, pH7.4, containing 0.01% SKL, 5% Trehalose.

**Original Concentration:** 200µg/mL

**Applications:** Positive Control; Immunogen; SDS-PAGE; WB.

(May be suitable for use in other assays to be determined by the end user.)

**Predicted isoelectric point:** 5.96

**Predicted Molecular Mass:** 40.4kDa

**Accurate Molecular Mass:** 40/18kDa as determined by SDS-PAGE reducing conditions.

**[ USAGE ]**

Reconstitute in 10mM PBS (pH7.4) to a concentration of 0.1-1.0 mg/mL. Do not vortex.

**[ STORAGE AND STABILITY ]**

**Storage:** Avoid repeated freeze/thaw cycles.

Store at 2-8°C for one month.

Aliquot and store at -80°C for 12 months.

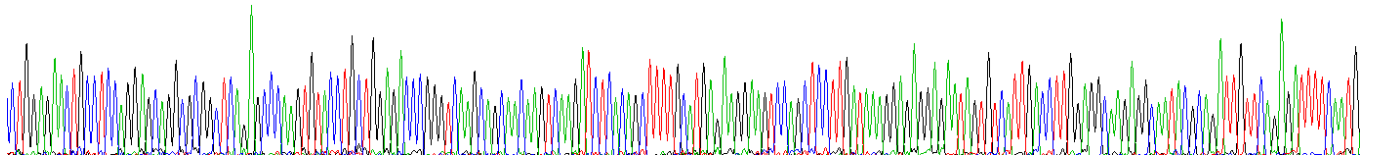
**Stability Test:** The thermal stability is described by the loss rate. The loss rate was determined by accelerated thermal degradation test, that is, incubate the protein at 37°C for 48h, and no obvious degradation and precipitation were observed. The loss rate is less than 5% within the expiration date under appropriate storage condition.

**[ SEQUENCE ]**

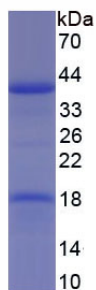
LENCLQEQ ARLRAQVYLL ETRVKQQQVK ISQLLHEKQV QLLDKGEENS  
 VIDLGGKRQY ADCSEIFNDG YKQSGFYKIK PLQSPAEFVS YCDMSDGGGW  
 TVIQRRSDGS ENFNDRWSDY ENGFGNFVQK NGEYWLGNRN LHLTTQGDY  
 TLKIDLADFE KNSRYAQYKN FKVGDEKNSY DLHIGEYSGT AGDSLGNFVH  
 PEVQWWASHQ RMKFSTWDRDNDNYEGNCAKEDQSGWWFNRCHSANL  
 NGFY HKGPYAKTD NGIVWHTWHG WWYSLKSVVM KIRPNDFIPN IV

**[ IDENTIFICATION ]**

~~CTGGAGACTCCTCCAGGAGCAAGGCGGCTCAGAGCCCAAGTGTACCTCTGGAGCCCGGCTCAAGCAGCAAGTCAAGATCTCACAGCTTTTCATGAGAGGAGTCCAGCTCCTGATAAAGGAGGGAGGATAGTGTCACTGACCTTGGAGCCAGAGCCCAATACCCAGATTGTTCAGAGATTTCAATG~~  
 I E N C L Q E Q A R L R A Q V Y L L E T R V K Q Q Q V K I S Q L L H E K E V Q L L D K G E E N S V I D L G G K R Q Y A D C S E I F N D



**Figure. Gene Sequencing (Extract)**



**[ IMPORTANT NOTE ]**

The kit is designed for research use only, we will not be responsible for any issue if the kit was used in clinical diagnostic or any other procedures.