

RPA746Mu01 50µg

Recombinant Fibroblast Growth Factor 23 (FGF23)

Organism Species: *Mus musculus* (Mouse)

Instruction manual

FOR RESEARCH USE ONLY

NOT FOR USE IN CLINICAL DIAGNOSTIC PROCEDURES

13th Edition (Revised in Aug, 2023)

[PROPERTIES]

Source: Prokaryotic expression

Host: *E.coli*

Residues: Tyr25~Val251

Tags: His and TrxA Taq

Subcellular Location: Secreted

Purity: > 95%

Traits: Freeze-dried powder

Buffer formulation: PBS, pH7.4, containing 0.01% SKL, 5% Trehalose .

Original Concentration: 2500µg/mL

Applications: Positive Control; Immunogen; SDS-PAGE; WB.

(May be suitable for use in other assays to be determined by the end user.)

Predicted isoelectric point: 9.8

Predicted Molecular Mass: 45.7kDa

Accurate Molecular Mass: 42kDa as determined by SDS-PAGE reducing conditions.

[USAGE]

Reconstitute in 10mM PBS (pH7.4) to a concentration of 0.1-1.0 mg/mL. Do not vortex.

[STORAGE AND STABILITY]

Storage: Avoid repeated freeze/thaw cycles.

Store at 2-8°C for one month.

Aliquot and store at -80°C for 12 months.

Stability Test: The thermal stability is described by the loss rate. The loss rate was determined by accelerated thermal degradation test, that is, incubate the protein at 37°C for 48h, and no obvious degradation and precipitation were observed. The loss rate is less than 5% within the expiration date under appropriate storage condition.

[SEQUENCE]

Y P D T S P L L G S N W G S L T H L Y T A T A R T S Y H L Q I H R D G H V D G T P H Q T I Y S A L M I T S E D A G S V V I T G A M T R R F L C M D L H G N I F G S L H F S P E N C
K F R Q W T L E N G Y D V Y L S Q K H H Y L V S L G R A K R I F Q P G T N P P P F S Q F L A R R N E V P L L H F Y T V R P R R H T R S A E D P P E R D P L N V L K P R P R A T P V
P V S C S R E L P S A E E G G P A A S D P L G V L R R G R G D A R G G A G G A D R C R P F P R F V

[IDENTIFICATION]

GAATCTATCCGGCTTCCCATATTCGGCTCAWCTGGGAGCTGGCCCTGACAGCTGGCCGGCCGACTATCCCTCCGATCCATGGGATGGCAGTCAAGCCGCCCATAGCCCATCTGAGCTCTCATGATCAGCGGACCTCCCTCTGGGGATACGGKTCATCTCGAGCTCTTGGATCTTCAGCTGCTCCGGACATTTTG

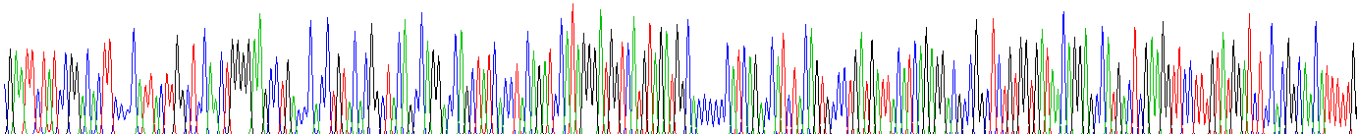


Figure . Gene Sequencing (extract)

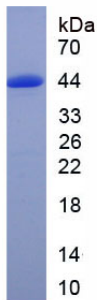


Figure. SDS-PAGE

[IMPORTANT NOTE]

The kit is designed for research use only, we will not be responsible for any issue if the kit was used in clinical diagnostic or any other procedures.