

**RPF421Hu05 100µg**

**Recombinant Fibulin 4 (FBLN4)**

**Organism Species: *Homo sapiens (Human)***

***Instruction manual***

FOR RESEARCH USE ONLY

NOT FOR USE IN CLINICAL DIAGNOSTIC PROCEDURES

---

12th Edition (Revised in Aug, 2016)

**[ PROPERTIES ]**

**Source:** Prokaryotic expression

**Host:** *E.coli*

**Residues:** Ser26~Phe443

**Tags:** N-terminal His and GST Tag

**Subcellular Location:** Secreted

**Purity:** > 90%

**Traits:** Freeze-dried powder

**Buffer formulation:** PBS, pH7.4, containing 0.01% SKL, 5% Trehalose.

**Original Concentration:** 200µg/mL

**Applications:** Positive Control; Immunogen; SDS-PAGE; WB.

(May be suitable for use in other assays to be determined by the end user.)

**Predicted isoelectric point:** 5.3

**Predicted Molecular Mass:** 76.8kDa

**Accurate Molecular Mass:** 82kDa as determined by SDS-PAGE reducing conditions.

**Phenomenon explanation:**

The possible reasons that the actual band size differs from the predicted are as follows:

1. Splice variants: Alternative splicing may create different sized proteins from the same gene.
2. Relative charge: The composition of amino acids may affect the charge of the protein.
3. Post-translational modification: Phosphorylation, glycosylation, methylation etc.
4. Post-translation cleavage: Many proteins are synthesized as pro-proteins, and then cleaved to give the active form.
5. Polymerization of the target protein: Dimerization, multimerization etc.

**[ USAGE ]**

Reconstitute in 10mM PBS (pH7.4) to a concentration of 0.1-1.0 mg/mL. Do not vortex.

**[ STORAGE AND STABILITY ]**

**Storage:** Avoid repeated freeze/thaw cycles.

Store at 2-8°C for one month.

Aliquot and store at -80°C for 12 months.

**Stability Test:** The thermal stability is described by the loss rate. The loss rate was determined by accelerated thermal degradation test, that is, incubate the protein at 37°C for 48h, and no obvious degradation and precipitation were observed. The loss rate is less than 5% within the expiration date under appropriate storage condition.

**[ SEQUENCE ]**

```
                SPQDS  EEPDSYTECT  DGYEWDPSQ
HCRDVNECLT  IPEACKGEMK  CINHYGGYLC  LPRSAAVIND  LHGEGPPPVP
PPAQHPNPCP  PGYEPDDQDS  CVDVDECAQA  LHDCRPSQDC  HNLPGSYQCT
CPDGYRKIGP  ECVDIDECRY  RYCQHRCVNL  PGSFRCQCEP  GFQLGPNNRS
CVDVNECDMG  APCEQRCFNS  YGTFLCRCHQ  GYELHRDGFS  CSDIDECSYS
SYLCQYRCIN  EPGRFSCHCP  QGYQLLATRL  CQDIDECESG  AHQCSEAQTC
VNFHGGYRCV  DTNRCVEPYI  QVSENRLCP  ASNPLCREQP  SSIVHRYMTI
TSERSVPADV  FQIQATSVYP  GAYNAFQIRA  GNSQGDFYIR  QINNVSAMLV
LARPVTGPRE  YVLDLEMVTM  NSLMSYRASS  VLRLTVFVGA  YTF
```

**[ IDENTIFICATION ]**

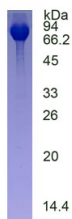


Figure. SDS-PAGE

**[ IMPORTANT NOTE ]**

The kit is designed for research use only, we will not be responsible for any issue if the kit was used in clinical diagnostic or any other procedures.